



[Go to Product page](#)

Datasheet for ABIN656922
anti-RRP7A antibody (C-Term)

1 Image

Overview

Quantity:	400 µL
Target:	RRP7A
Binding Specificity:	AA 240-269, C-Term
Reactivity:	Human
Host:	Rabbit
Clonality:	Polyclonal
Conjugate:	This RRP7A antibody is un-conjugated
Application:	Western Blotting (WB)

Product Details

Immunogen:	This RRP7A antibody is generated from rabbits immunized with a KLH conjugated synthetic peptide between 240-269 amino acids from the C-terminal region of human RRP7A.
Clone:	RB32607
Isotype:	Ig Fraction
Predicted Reactivity:	M
Purification:	This antibody is purified through a protein A column, followed by peptide affinity purification.

Target Details

Target:	RRP7A
Alternative Name:	RRP7A (RRP7A Products)

Target Details

Molecular Weight:	32334
Gene ID:	27341
NCBI Accession:	NP_056518
UniProt:	Q9Y3A4

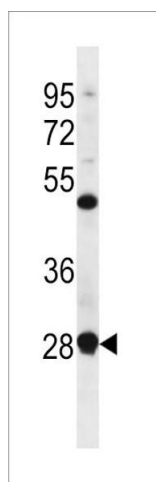
Application Details

Application Notes:	WB: 1:1000
Restrictions:	For Research Use only

Handling

Format:	Liquid
Buffer:	Purified polyclonal antibody supplied in PBS with 0.09 % (W/V) sodium azide.
Preservative:	Sodium azide
Precaution of Use:	This product contains Sodium azide: a POISONOUS AND HAZARDOUS SUBSTANCE which should be handled by trained staff only.
Storage:	4 °C, -20 °C
Storage Comment:	RRP7A Antibody (C-term) can be refrigerated at 2-8 °C for up to 6 months. For long term storage, place the at -20 °C.
Expiry Date:	6 months

Images



Western Blotting

Image 1. RRP7A Antibody (C-term) (ABIN656922 and ABIN2846116) western blot analysis in CEM cell line lysates (35 µg/lane). This demonstrates the RRP7A antibody detected the RRP7A protein (arrow).