

Datasheet for ABIN656928
anti-TBCA antibody (N-Term)



[Go to Product page](#)

1 Image

Overview

Quantity:	400 µL
Target:	TBCA
Binding Specificity:	AA 15-44, N-Term
Reactivity:	Human
Host:	Rabbit
Clonality:	Polyclonal
Conjugate:	This TBCA antibody is un-conjugated
Application:	Western Blotting (WB)

Product Details

Immunogen:	This TBCA antibody is generated from rabbits immunized with a KLH conjugated synthetic peptide between 15-44 amino acids from the N-terminal region of human TBCA.
Clone:	RB32654
Isotype:	Ig Fraction
Predicted Reactivity:	Rb
Purification:	This antibody is purified through a protein A column, followed by peptide affinity purification.

Target Details

Target:	TBCA
Alternative Name:	TBCA (TBCA Products)

Target Details

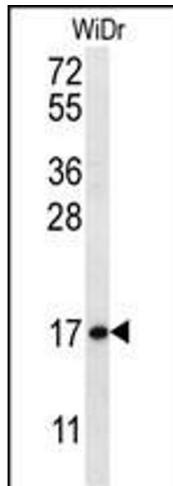
Background:	The product of this gene is one of four proteins (cofactors A, D, E, and C) involved in the pathway leading to correctly folded beta-tubulin from folding intermediates. Cofactors A and D are believed to play a role in capturing and stabilizing beta-tubulin intermediates in a quasi-native confirmation. Cofactor E binds to the cofactor D/beta-tubulin complex, interaction with cofactor C then causes the release of beta-tubulin polypeptides that are committed to the native state. This gene encodes chaperonin cofactor A.
Molecular Weight:	12855
Gene ID:	6902
NCBI Accession:	NP_004598
UniProt:	O75347
Pathways:	SARS-CoV-2 Protein Interactome

Application Details

Application Notes:	WB: 1:1000
Restrictions:	For Research Use only

Handling

Format:	Liquid
Buffer:	Purified polyclonal antibody supplied in PBS with 0.09 % (W/V) sodium azide.
Preservative:	Sodium azide
Precaution of Use:	This product contains Sodium azide: a POISONOUS AND HAZARDOUS SUBSTANCE which should be handled by trained staff only.
Storage:	4 °C,-20 °C
Storage Comment:	TBCA Antibody (N-term) can be refrigerated at 2-8 °C for up to 6 months. For long term storage, place the at -20 °C.
Expiry Date:	6 months



Western Blotting

Image 1. TBCA Antibody (N-term) (ABIN656928 and ABIN2846121) western blot analysis in WiDr cell line lysates (35 µg/lane). This demonstrates the TBCA antibody detected the TBCA protein (arrow).