



[Go to Product page](#)

Datasheet for ABIN656934
anti-BVES antibody (C-Term)

2 Images

Overview

Quantity:	400 µL
Target:	BVES
Binding Specificity:	AA 313-342, C-Term
Reactivity:	Human
Host:	Rabbit
Clonality:	Polyclonal
Conjugate:	This BVES antibody is un-conjugated
Application:	Western Blotting (WB), Immunohistochemistry (Paraffin-embedded Sections) (IHC (p))

Product Details

Immunogen:	This BVES antibody is generated from rabbits immunized with a KLH conjugated synthetic peptide between 313-342 amino acids from the C-terminal region of human BVES.
Clone:	RB32739
Isotype:	Ig Fraction
Purification:	This antibody is purified through a protein A column, followed by peptide affinity purification.

Target Details

Target:	BVES
Alternative Name:	BVES (BVES Products)
Background:	This gene encodes a member of the POP family of proteins containing three putative

Target Details

transmembrane domains. This gene is expressed in cardiac and skeletal muscle and may play an important role in development of these tissues. The mouse ortholog may be involved in the regeneration of adult skeletal muscle and may act as a cell adhesion molecule in coronary vasculogenesis. Two transcript variants encoding the same protein have been found for this gene.

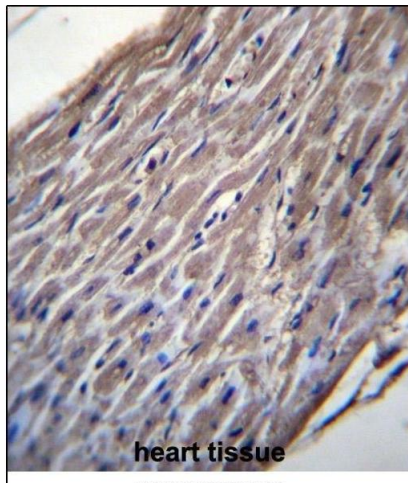
Molecular Weight:	41451
Gene ID:	11149
NCBI Accession:	NP_001186492 , NP_009004 , NP_671488
UniProt:	Q8NE79

Application Details

Application Notes:	WB: 1:1000. IHC-P: 1:10~50
Restrictions:	For Research Use only

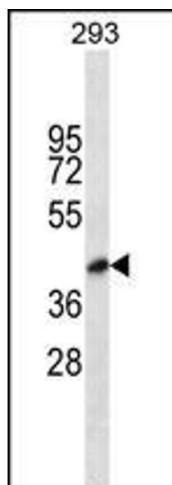
Handling

Format:	Liquid
Buffer:	Purified polyclonal antibody supplied in PBS with 0.09 % (W/V) sodium azide.
Preservative:	Sodium azide
Precaution of Use:	This product contains Sodium azide: a POISONOUS AND HAZARDOUS SUBSTANCE which should be handled by trained staff only.
Storage:	4 °C,-20 °C
Storage Comment:	BVES Antibody (C-term) can be refrigerated at 2-8 °C for up to 6 months. For long term storage, place the at -20 °C.
Expiry Date:	6 months



Immunohistochemistry (Paraffin-embedded Sections)

Image 1. BVES Antibody (C-term) (ABIN656934 and ABIN2846126) immunohistochemistry analysis in formalin fixed and paraffin embedded human heart tissue followed by peroxidase conjugation of the secondary antibody and DAB staining. This data demonstrates the use of BVES Antibody (C-term) for immunohistochemistry. Clinical relevance has not been evaluated.



Western Blotting

Image 2. BVES Antibody (C-term) (ABIN656934 and ABIN2846126) western blot analysis in 293 cell line lysates (35 µg/lane). This demonstrates the BVES antibody detected the BVES protein (arrow).