

Datasheet for ABIN656940
anti-SP6 antibody (AA 196-225)[Go to Product page](#)

2 Images

Overview

Quantity:	400 µL
Target:	SP6
Binding Specificity:	AA 196-225
Reactivity:	Human
Host:	Rabbit
Clonality:	Polyclonal
Conjugate:	This SP6 antibody is un-conjugated
Application:	Western Blotting (WB), Flow Cytometry (FACS)

Product Details

Immunogen:	This SP6 antibody is generated from rabbits immunized with a KLH conjugated synthetic peptide between 196-225 amino acids from the Central region of human SP6.
Clone:	RB32770
Isotype:	Ig Fraction
Predicted Reactivity:	M
Purification:	This antibody is purified through a protein A column, followed by peptide affinity purification.

Target Details

Target:	SP6
Alternative Name:	SP6 (SP6 Products)

Target Details

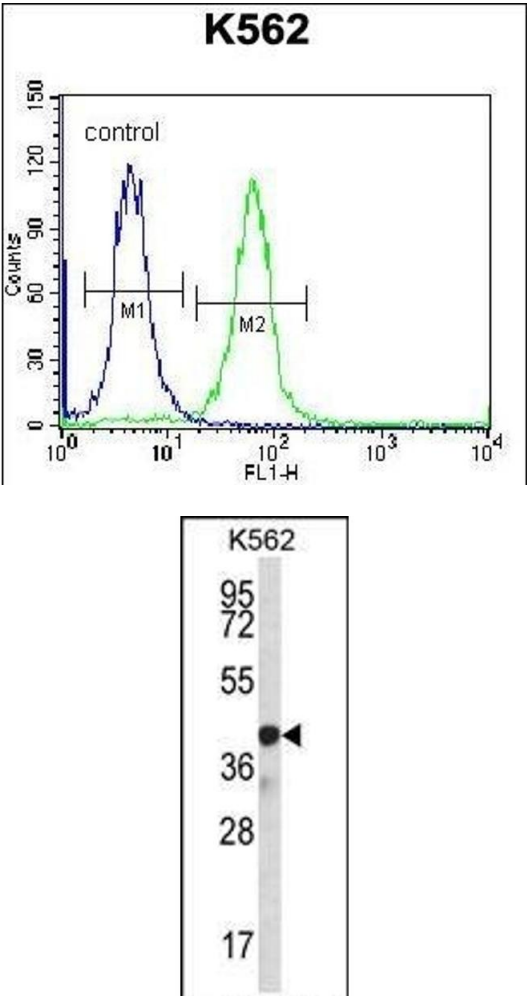
Background:	SP6 belongs to a family of transcription factors that contain 3 classical zinc finger DNA-binding domains consisting of a zinc atom tetrahedrally coordinated by 2 cysteines and 2 histidines (C2H2 motif). These transcription factors bind to GC-rich sequences and related GT and CACCC boxes (Schohy et al., 2000 [PubMed 11087666]).
Molecular Weight:	39840
Gene ID:	80320
NCBI Accession:	NP_001245177 , NP_954871
UniProt:	Q3SY56

Application Details

Application Notes:	WB: 1:1000. FC: 1:10~50
Restrictions:	For Research Use only

Handling

Format:	Liquid
Buffer:	Purified polyclonal antibody supplied in PBS with 0.09 % (W/V) sodium azide.
Preservative:	Sodium azide
Precaution of Use:	This product contains Sodium azide: a POISONOUS AND HAZARDOUS SUBSTANCE which should be handled by trained staff only.
Storage:	4 °C, -20 °C
Storage Comment:	SP6 Antibody (Center) can be refrigerated at 2-8 °C for up to 6 months. For long term storage, place the at -20 °C.
Expiry Date:	6 months



Flow Cytometry

Image 1. SP6 Antibody (Center) (ABIN656940 and ABIN2846130) flow cytometric analysis of K562 cells (right histogram) compared to a negative control cell (left histogram).FITC-conjugated donkey-anti-rabbit secondary antibodies were used for the analysis.

Western Blotting

Image 2. SP6 Antibody (Center) (ABIN656940 and ABIN2846130) western blot analysis in K562 cell line lysates (35 µg/lane).This demonstrates the SP6 antibody detected the SP6 protein (arrow).