

Datasheet for ABIN6569403
anti-CLDND1 antibody



[Go to Product page](#)

1 Image

Overview

Quantity:	200 µL
Target:	CLDND1
Reactivity:	Mouse, Rat
Host:	Rabbit
Clonality:	Polyclonal
Conjugate:	This CLDND1 antibody is un-conjugated
Application:	Western Blotting (WB)

Product Details

Immunogen:	Recombinant protein of human CLDND1
Isotype:	IgG
Purification:	Affinity purification

Target Details

Target:	CLDND1
Alternative Name:	CLDND1 (CLDND1 Products)

Background: Synonyms: C3orf4,Chromosome 3 open reading frame 4,Claudin domain containing 1,Claudin domain containing 1 protein
GENX3745,MGC111162,MGC3316,MGC9861,OTTHUMP00000217407,OTTHUMP00000217408,OTTHUMP00000217423,

Molecular Weight:	Observed_MW: 30kDa
Weight:	Calculated_MW: 17kDa/21kDa/28kDa

Target Details

Gene ID: 56650

UniProt: [Q9NY35](#)

Application Details

Application Notes: WB 1:500 - 1:2000

Restrictions: For Research Use only

Handling

Concentration: 1 mg/mL

Buffer: Buffer: PBS with 0.02 % sodium azide, 50 % glycerol, pH 7.3.

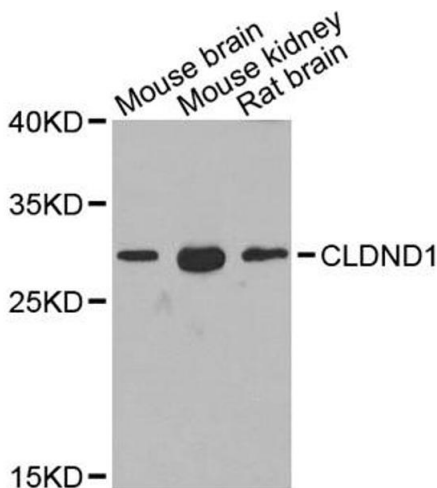
Preservative: Sodium azide

Precaution of Use: This product contains Sodium azide: a POISONOUS AND HAZARDOUS SUBSTANCE which should be handled by trained staff only.

Storage: -20 °C

Storage Comment: Store at -20°C. Avoid freeze / thaw cycles.

Images



Western Blotting

Image 1. Western blot analysis of extracts of various cell lines, using CLDND1 antibody.