



[Go to Product page](#)

Datasheet for ABIN656947

anti-MBNL2 antibody (C-Term)

3 Images

Overview

Quantity:	400 µL
Target:	MBNL2
Binding Specificity:	AA 261-290, C-Term
Reactivity:	Human
Host:	Rabbit
Clonality:	Polyclonal
Application:	Western Blotting (WB), Flow Cytometry (FACS), Immunohistochemistry (Paraffin-embedded Sections) (IHC (p))

Product Details

Immunogen:	This MBNL2 antibody is generated from rabbits immunized with a KLH conjugated synthetic peptide between 261-290 amino acids from the C-terminal region of human MBNL2.
Clone:	RB32800
Isotype:	Ig Fraction
Purification:	This antibody is purified through a protein A column, followed by peptide affinity purification.

Target Details

Target:	MBNL2
Alternative Name:	MBNL2 (MBNL2 Products)
Background:	This gene encodes a C3H-type zinc finger protein, which is similar to the Drosophila melanogaster muscleblind B protein. Drosophila muscleblind is a gene required for

Target Details

photoreceptor differentiation. Several alternatively spliced transcript variants have been described but the full-length natures of only some have been determined.

Molecular Weight: 40518

Gene ID: 10150

NCBI Accession: [NP_659002](#), [NP_997187](#)

UniProt: [Q5VZF2](#)

Application Details

Application Notes: WB: 1:1000. IHC-P: 1:10~50. FC: 1:10~50

Restrictions: For Research Use only

Handling

Format: Liquid

Buffer: Purified polyclonal antibody supplied in PBS with 0.09 % (W/V) sodium azide.

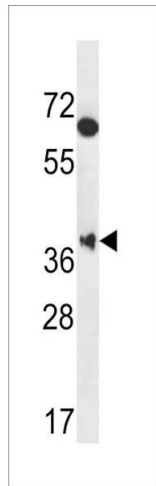
Preservative: Sodium azide

Precaution of Use: This product contains Sodium azide: a POISONOUS AND HAZARDOUS SUBSTANCE which should be handled by trained staff only.

Storage: 4 °C,-20 °C

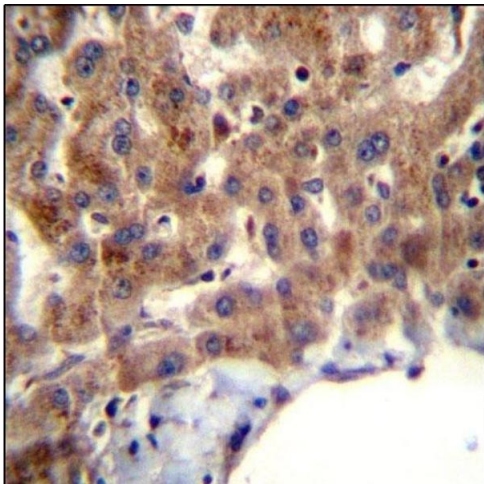
Storage Comment: MBNL2 Antibody (C-term) can be refrigerated at 2-8 °C for up to 6 months. For long term storage, place the at -20 °C.

Expiry Date: 6 months



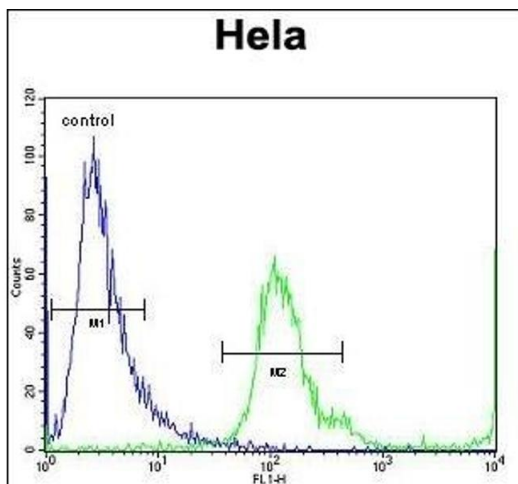
Western Blotting

Image 1. MBNL2 Antibody (C-term) (ABIN656947 and ABIN2846136) western blot analysis in HeLa cell line lysates (35 µg/lane). This demonstrates the MBNL2 antibody detected the MBNL2 protein (arrow).



Immunohistochemistry (Paraffin-embedded Sections)

Image 2. MBNL2 Antibody (C-term) (ABIN656947 and ABIN2846136) immunohistochemistry analysis in formalin fixed and paraffin embedded human liver tissue followed by peroxidase conjugation of the secondary antibody and DAB staining. This data demonstrates the use of MBNL2 Antibody (C-term) for immunohistochemistry. Clinical relevance has not been evaluated.



Flow Cytometry

Image 3. MBNL2 Antibody (C-term) (ABIN656947 and ABIN2846136) flow cytometric analysis of HeLa cells (right histogram) compared to a negative control cell (left histogram). FITC-conjugated goat-anti-rabbit secondary antibodies were used for the analysis.