

Datasheet for ABIN656950  
**anti-PROSC antibody (C-Term)**[Go to Product page](#)

## 1 Image

## Overview

Quantity:	400 µL
Target:	PROSC
Binding Specificity:	AA 232-260, C-Term
Reactivity:	Human
Host:	Rabbit
Clonality:	Polyclonal
Conjugate:	This PROSC antibody is un-conjugated
Application:	Western Blotting (WB)

## Product Details

Immunogen:	This PROSC antibody is generated from rabbits immunized with a KLH conjugated synthetic peptide between 232-260 amino acids from the C-terminal region of human PROSC.
Clone:	RB32806
Isotype:	Ig Fraction
Purification:	This antibody is purified through a protein A column, followed by peptide affinity purification.

## Target Details

Target:	PROSC
Alternative Name:	PROSC ( <a href="#">PROSC Products</a> )
Background:	PROSC is ubiquitously expressed in human tissues and has been highly conserved among

## Target Details

divergent species from bacteria to mammals, suggesting it has an important cellular function. PROSC is likely to be a soluble cytoplasmic protein, but its function remains to be determined. The *P. aeruginosa* homolog of this novel gene is located upstream of and may be cotranscribed with a known proline biosynthetic gene, hence the human gene was called PROSC, for 'proline synthetase cotranscribed, bacterial homolog.'

Molecular Weight: 30344

Gene ID: 11212

NCBI Accession: [NP\\_009129](#)

UniProt: [O94903](#)

## Application Details

Application Notes: WB: 1:1000

Restrictions: For Research Use only

## Handling

Format: Liquid

Buffer: Purified polyclonal antibody supplied in PBS with 0.09 % (W/V) sodium azide.

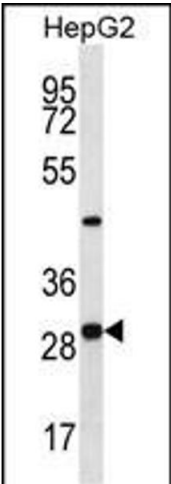
Preservative: Sodium azide

Precaution of Use: This product contains Sodium azide: a POISONOUS AND HAZARDOUS SUBSTANCE which should be handled by trained staff only.

Storage: 4 °C, -20 °C

Storage Comment: PROSC Antibody (C-term) can be refrigerated at 2-8 °C for up to 6 months. For long term storage, place the at -20 °C.

Expiry Date: 6 months



Western Blotting

**Image 1.** PROSC Antibody (C-term) (ABIN656950 and ABIN2846137) western blot analysis in HepG2 cell line lysates (35 µg/lane). This demonstrates the PROSC antibody detected the PROSC protein (arrow).