

Datasheet for ABIN656954
anti-CTPS2 antibody (C-Term)[Go to Product page](#)

2 Images

Overview

Quantity:	400 µL
Target:	CTPS2
Binding Specificity:	AA 450-479, C-Term
Reactivity:	Human
Host:	Rabbit
Clonality:	Polyclonal
Conjugate:	This CTPS2 antibody is un-conjugated
Application:	Western Blotting (WB)

Product Details

Immunogen:	This CTPS2 antibody is generated from rabbits immunized with a KLH conjugated synthetic peptide between 450-479 amino acids from the C-terminal region of human CTPS2.
Clone:	RB32822
Isotype:	Ig Fraction
Predicted Reactivity:	B
Purification:	This antibody is purified through a protein A column, followed by peptide affinity purification.

Target Details

Target:	CTPS2
Alternative Name:	CTPS2 (CTPS2 Products)

Target Details

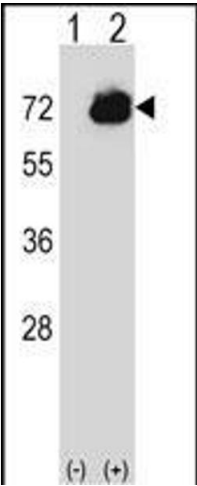
Background:	The protein encoded by this gene catalyzes the formation of CTP from UTP with the concomitant deamination of glutamine to glutamate. This protein is the rate-limiting enzyme in the synthesis of cytosine nucleotides, which play an important role in various metabolic processes and provide the precursors necessary for the synthesis of RNA and DNA. Cancer cells that exhibit increased cell proliferation also exhibit an increased activity of this encoded protein. Thus, this protein is an attractive target for selective chemotherapy. Three alternatively spliced transcript variants encoding the same protein have been described for this gene.
Molecular Weight:	65678
Gene ID:	56474
NCBI Accession:	NP_001137474 , NP_062831 , NP_787055
UniProt:	Q9NRF8
Pathways:	Ribonucleoside Biosynthetic Process

Application Details

Application Notes:	WB: 1:1000. WB: 1:1000
Restrictions:	For Research Use only

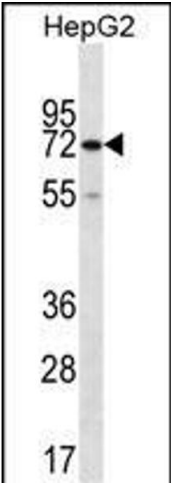
Handling

Format:	Liquid
Buffer:	Purified polyclonal antibody supplied in PBS with 0.09 % (W/V) sodium azide.
Preservative:	Sodium azide
Precaution of Use:	This product contains Sodium azide: a POISONOUS AND HAZARDOUS SUBSTANCE which should be handled by trained staff only.
Storage:	4 °C,-20 °C
Storage Comment:	CTPS2 Antibody (C-term) can be refrigerated at 2-8 °C for up to 6 months. For long term storage, place the at -20 °C.
Expiry Date:	6 months



Western Blotting

Image 1. Western blot analysis of CTPS2 (arrow) using rabbit polyclonal CTPS2 Antibody (C-term) (ABIN656954 and ABIN2846140). 293 cell lysates (2 µg/lane) either nontransfected (Lane 1) or transiently transfected (Lane 2) with the CTPS2 gene.



Western Blotting

Image 2. CTPS2 Antibody (C-term) (ABIN656954 and ABIN2846140) western blot analysis in HepG2 cell line lysates (35 µg/lane). This demonstrates the CTPS2 antibody detected the CTPS2 protein (arrow).