

Datasheet for ABIN656961
anti-CLMP antibody (AA 81-110)

4 Images

[Go to Product page](#)

Overview

Quantity:	400 µL
Target:	CLMP
Binding Specificity:	AA 81-110
Reactivity:	Human, Mouse
Host:	Rabbit
Clonality:	Polyclonal
Application:	Western Blotting (WB), Immunohistochemistry (Paraffin-embedded Sections) (IHC (p))

Product Details

Immunogen:	This ASAM antibody is generated from rabbits immunized with a KLH conjugated synthetic peptide between 81-110 amino acids from the Central region of human ASAM.
Clone:	RB32860
Isotype:	Ig Fraction
Predicted Reactivity:	Rat
Purification:	This antibody is purified through a protein A column, followed by peptide affinity purification.

Target Details

Target:	CLMP
Alternative Name:	ASAM (CLMP Products)
Background:	The CTX (see VSIG2, MIM 606011) family of proteins, including ASAM, are type I

Target Details

transmembrane proteins within the Ig superfamily that localize to junctional complexes between endothelial and epithelial cells and may play a role in cell-cell adhesion (Raschperger et al., 2004 [PubMed 14573622]).[supplied by OMIM].

Molecular Weight: 41281

Gene ID: 79827

NCBI Accession: [NP_079045](#)

UniProt: [Q9H6B4](#)

Application Details

Application Notes: WB: 1:1000. WB: 1:2000. IHC-P-Leica: 1:500. IHC-P-Leica: 1:500

Restrictions: For Research Use only

Handling

Format: Liquid

Buffer: Purified polyclonal antibody supplied in PBS with 0.09 % (W/V) sodium azide.

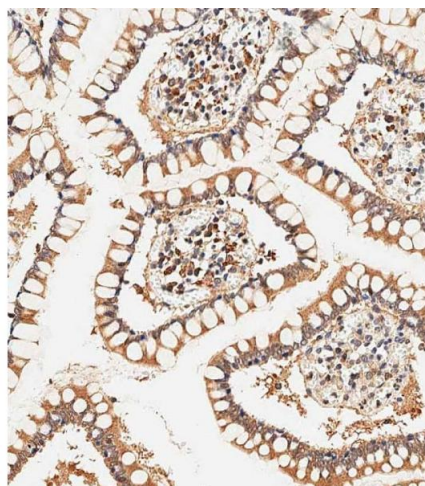
Preservative: Sodium azide

Precaution of Use: This product contains Sodium azide: a POISONOUS AND HAZARDOUS SUBSTANCE which should be handled by trained staff only.

Storage: 4 °C, -20 °C

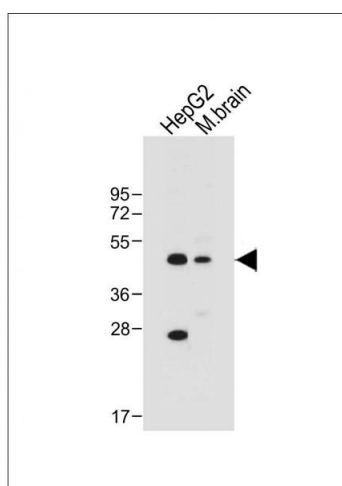
Storage Comment: ASAM Antibody (Center) can be refrigerated at 2-8 °C for up to 6 months. For long term storage, place the at -20 °C.

Expiry Date: 6 months



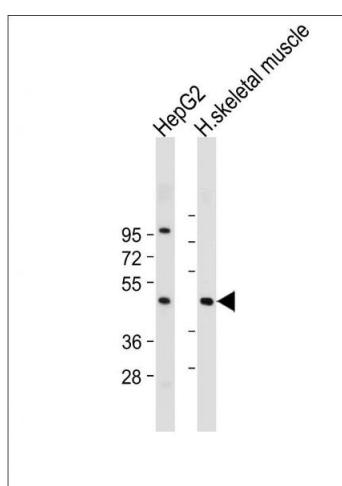
Immunohistochemistry (Paraffin-embedded Sections)

Image 1. Immunohistochemical analysis of paraffin-embedded human small intestine tissue using (ABIN656961 and ABIN2846145) performed on the Leica® BOND RXm. Tissue was fixed with formaldehyde at room temperature, antigen retrieval was by heat mediation with a EDTA buffer (pH 9.0). Samples were incubated with primary Antibody (1:500) for 1 hours at room temperature. A undiluted biotinylated CRF Anti-Polyvalent HRP Polymer antibody was used as the secondary antibody.



Western Blotting

Image 2. All lanes : Anti-AS Antibody (Center) at 1:1000 dilution Lane 1: HepG2 whole cell lysate Lane 2: Mouse brain tissue lysate Lysates/proteins at 20 µg per lane. Secondary Goat Anti-Rabbit IgG, (H+L), Peroxidase conjugated at 1/10000 dilution. Predicted band size : 41 kDa Blocking/Dilution buffer: 5 % NFDM/TBST.



Western Blotting

Image 3. All lanes : Anti-AS Antibody (Center) at 1:2000 dilution Lane 1: HepG2 whole cell lysate Lane 2: Human skeletal muscle tissue lysate Lysates/proteins at 20 µg per lane. Secondary Goat Anti-Rabbit IgG, (H+L), Peroxidase conjugated at 1/10000 dilution. Predicted band size : 41 kDa Blocking/Dilution buffer: 5 % NFDM/TBST.

Please check the [product details page](#) for more images. Overall 4 images are available for ABIN656961.