

Datasheet for ABIN656962
anti-Cyclin I antibody (C-Term)[Go to Product page](#)

1 Image

Overview

Quantity:	400 µL
Target:	Cyclin I (CCNI)
Binding Specificity:	AA 302-331, C-Term
Reactivity:	Human
Host:	Rabbit
Clonality:	Polyclonal
Conjugate:	This Cyclin I antibody is un-conjugated
Application:	Western Blotting (WB)

Product Details

Immunogen:	This CCNI antibody is generated from rabbits immunized with a KLH conjugated synthetic peptide between 302-331 amino acids from the C-terminal region of human CCNI.
Clone:	RB32884
Isotype:	Ig Fraction
Purification:	This antibody is purified through a protein A column, followed by peptide affinity purification.

Target Details

Target:	Cyclin I (CCNI)
Alternative Name:	CCNI (CCNI Products)
Background:	The protein encoded by this gene belongs to the highly conserved cyclin family, whose

Target Details

members are characterized by a dramatic periodicity in protein abundance through the cell cycle. Cyclins function as regulators of CDK kinases. Different cyclins exhibit distinct expression and degradation patterns which contribute to the temporal coordination of each mitotic event. This cyclin shows the highest similarity with cyclin G. The transcript of this gene was found to be expressed constantly during cell cycle progression. The function of this cyclin has not yet been determined.

Molecular Weight: 42557

Gene ID: 10983

NCBI Accession: [NP_006826](#)

UniProt: [Q14094](#)

Pathways: [Cell Division Cycle](#)

Application Details

Application Notes: WB: 1:1000

Restrictions: For Research Use only

Handling

Format: Liquid

Buffer: Purified polyclonal antibody supplied in PBS with 0.09 % (W/V) sodium azide.

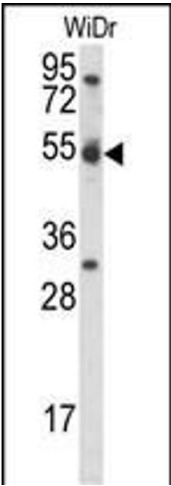
Preservative: Sodium azide

Precaution of Use: This product contains Sodium azide: a POISONOUS AND HAZARDOUS SUBSTANCE which should be handled by trained staff only.

Storage: 4 °C, -20 °C

Storage Comment: CCNI Antibody (C-term) can be refrigerated at 2-8 °C for up to 6 months. For long term storage, place the at -20 °C.

Expiry Date: 6 months



Western Blotting

Image 1. CCNI Antibody (C-term) (ABIN656962 and ABIN2846146) western blot analysis in WiDr cell line lysates (35 µg/lane). This demonstrates the CCNI antibody detected the CCNI protein (arrow).