



[Go to Product page](#)

Datasheet for ABIN656966
anti-Nitrilase 1 antibody (C-Term)

1 Image

Overview

Quantity:	400 µL
Target:	Nitrilase 1 (NIT1)
Binding Specificity:	AA 298-327, C-Term
Reactivity:	Human
Host:	Rabbit
Clonality:	Polyclonal
Conjugate:	This Nitrilase 1 antibody is un-conjugated
Application:	Western Blotting (WB)

Product Details

Immunogen:	This NIT1 antibody is generated from rabbits immunized with a KLH conjugated synthetic peptide between 298-327 amino acids from the C-terminal region of human NIT1.
Clone:	RB32905
Isotype:	Ig Fraction
Predicted Reactivity:	B
Purification:	This antibody is purified through a protein A column, followed by peptide affinity purification.

Target Details

Target:	Nitrilase 1 (NIT1)
Alternative Name:	NIT1 (NIT1 Products)

Target Details

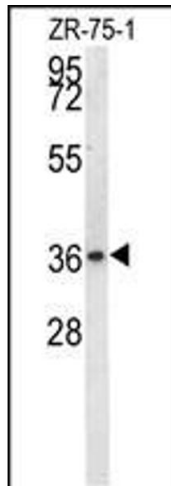
Background:	This gene encodes a member of the nitrilase protein family with homology to bacterial and plant nitrilases, enzymes that cleave nitriles and organic amides to the corresponding carboxylic acids plus ammonia. Multiple transcript variants encoding different isoforms have been found for this gene.
Molecular Weight:	35896
Gene ID:	4817
NCBI Accession:	NP_001172021 , NP_001172022 , NP_001172023 , NP_005591
UniProt:	Q86X76

Application Details

Application Notes:	WB: 1:1000
Restrictions:	For Research Use only

Handling

Format:	Liquid
Buffer:	Purified polyclonal antibody supplied in PBS with 0.09 % (W/V) sodium azide.
Preservative:	Sodium azide
Precaution of Use:	This product contains Sodium azide: a POISONOUS AND HAZARDOUS SUBSTANCE which should be handled by trained staff only.
Storage:	4 °C,-20 °C
Storage Comment:	NIT1 Antibody (C-term) can be refrigerated at 2-8 °C for up to 6 months. For long term storage, place the at -20 °C.
Expiry Date:	6 months



Western Blotting

Image 1. NIT1 Antibody (C-term) (ABIN656966 and ABIN2846150) western blot analysis in ZR-75-1 cell line lysates (35 µg/lane). This demonstrates the NIT1 antibody detected the NIT1 protein (arrow).