

Datasheet for ABIN656969

**anti-CCDC90B antibody (AA 123-152)**[Go to Product page](#)**2** Images

## Overview

Quantity:	400 µL
Target:	CCDC90B
Binding Specificity:	AA 123-152
Reactivity:	Human
Host:	Rabbit
Clonality:	Polyclonal
Conjugate:	This CCDC90B antibody is un-conjugated
Application:	Western Blotting (WB), Immunohistochemistry (Paraffin-embedded Sections) (IHC (p))

## Product Details

Immunogen:	This CCDC90B antibody is generated from rabbits immunized with a KLH conjugated synthetic peptide between 123-152 amino acids from the Central region of human CCDC90B.
Clone:	RB32911
Isotype:	Ig Fraction
Predicted Reactivity:	M, Rat
Purification:	This antibody is purified through a protein A column, followed by peptide affinity purification.

## Target Details

Target:	CCDC90B
Alternative Name:	CCDC90B ( <a href="#">CCDC90B Products</a> )

## Target Details

**Background:** Coiled-coil domain containing 90B (CCDC90B) protein has seven predicted alpha helices, a characteristic of coiled-coil proteins. CCDC90B is characterized by the presence of a domain of unknown function, DUF1640. This domain is a characteristic of the entire protein with the exception of the first twenty-three amino acid residues, which are a mitochondrial targeting site and cleaved. This entry describes 2 isoforms produced by alternative splicing.

**Molecular Weight:** 29506

**Gene ID:** 60492

**NCBI Accession:** [NP\\_068597](#)

**UniProt:** [Q9GZT6](#)

## Application Details

**Application Notes:** WB: 1:1000. IHC-P: 1:10~50

**Restrictions:** For Research Use only

## Handling

**Format:** Liquid

**Buffer:** Purified polyclonal antibody supplied in PBS with 0.09 % (W/V) sodium azide.

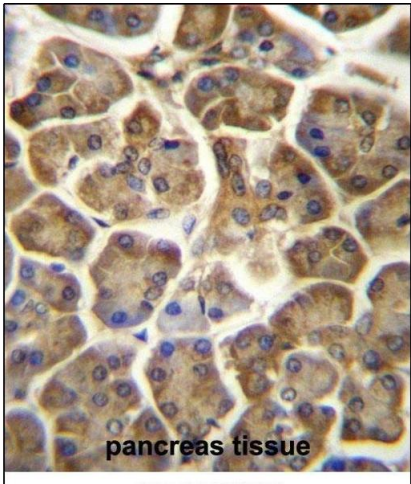
**Preservative:** Sodium azide

**Precaution of Use:** This product contains Sodium azide: a POISONOUS AND HAZARDOUS SUBSTANCE which should be handled by trained staff only.

**Storage:** 4 °C,-20 °C

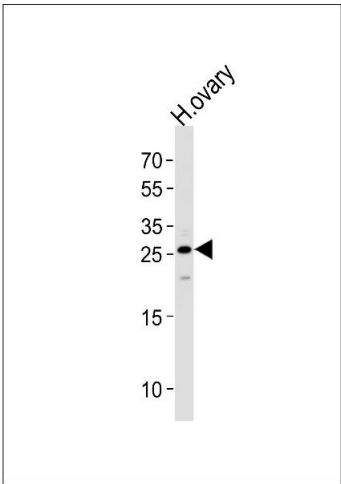
**Storage Comment:** CCDC90B Antibody (Center) can be refrigerated at 2-8 °C for up to 6 months. For long term storage, place the at -20 °C.

**Expiry Date:** 6 months



**Immunohistochemistry (Paraffin-embedded Sections)**

**Image 1.** CCDC90B Antibody (Center) (ABIN656969 and ABIN2846153) immunohistochemistry analysis in formalin fixed and paraffin embedded human pancreas tissue followed by peroxidase conjugation of the secondary antibody and DAB staining. This data demonstrates the use of CCDC90B Antibody (Center) for immunohistochemistry. Clinical relevance has not been evaluated.



**Western Blotting**

**Image 2.** Western blot analysis of lysate from human ovary tissue lysate, using CCDC90B Antibody (Center) (ABIN656969 and ABIN2846153). (ABIN656969 and ABIN2846153) was diluted at 1:1000 at each lane. A goat anti-rabbit IgG H&L(HRP) at 1:5000 dilution was used as the secondary antibody. Lysate at 35 µg per lane.