

Datasheet for ABIN656979
anti-FSHB antibody (AA 36-64)[Go to Product page](#)

2 Images

Overview

Quantity:	400 µL
Target:	FSHB
Binding Specificity:	AA 36-64
Reactivity:	Human
Host:	Rabbit
Clonality:	Polyclonal
Conjugate:	This FSHB antibody is un-conjugated
Application:	Western Blotting (WB), Flow Cytometry (FACS)

Product Details

Immunogen:	This FSHB/FSH antibody is generated from rabbits immunized with a KLH conjugated synthetic peptide between 36-64 amino acids from the Central region of human FSHB/FSH.
Clone:	RB32962
Isotype:	Ig Fraction
Purification:	This antibody is purified through a protein A column, followed by peptide affinity purification.

Target Details

Target:	FSHB
Alternative Name:	FSHB/FSH (FSHB Products)
Background:	The pituitary glycoprotein hormone family includes follicle-stimulating hormone, luteinizing

Target Details

hormone, chorionic gonadotropin, and thyroid-stimulating hormone. All of these glycoproteins consist of an identical alpha subunit and a hormone-specific beta subunit. This gene encodes the beta subunit of follicle-stimulating hormone. In conjunction with luteinizing hormone, follicle-stimulating hormone induces egg and sperm production. Alternative splicing results in two transcript variants encoding the same protein.

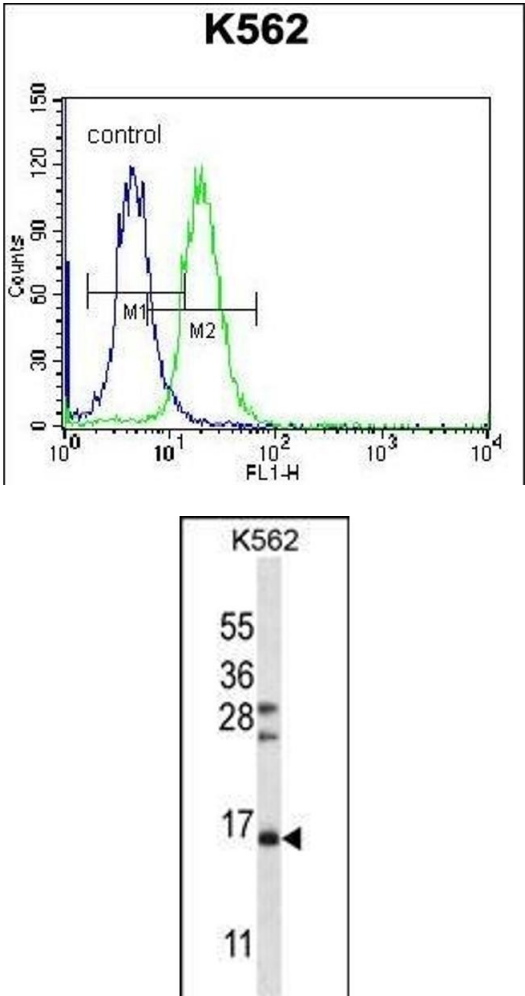
Molecular Weight:	14700
Gene ID:	2488
NCBI Accession:	NP_000501 , NP_001018090
UniProt:	P01225
Pathways:	Peptide Hormone Metabolism , Hormone Activity , C21-Steroid Hormone Metabolic Process

Application Details

Application Notes:	WB: 1:1000. FC: 1:10~50
Restrictions:	For Research Use only

Handling

Format:	Liquid
Buffer:	Purified polyclonal antibody supplied in PBS with 0.09 % (W/V) sodium azide.
Preservative:	Sodium azide
Precaution of Use:	This product contains Sodium azide: a POISONOUS AND HAZARDOUS SUBSTANCE which should be handled by trained staff only.
Storage:	4 °C, -20 °C
Storage Comment:	FSHB/FSH Antibody (Center) can be refrigerated at 2-8 °C for up to 6 months. For long term storage, place the at -20 °C.
Expiry Date:	6 months



Flow Cytometry

Image 1. FSHB/FSH Antibody (Center) (ABIN656979 and ABIN2846162) flow cytometric analysis of K562 cells (right histogram) compared to a negative control cell (left histogram).FITC-conjugated donkey-anti-rabbit secondary antibodies were used for the analysis.

Western Blotting

Image 2. FSHB/FSH Antibody (Center) (ABIN656979 and ABIN2846162) western blot analysis in K562 cell line lysates (35 µg/lane).This demonstrates the FSHB/FSH antibody detected the FSHB/FSH protein (arrow).