

Datasheet for ABIN656986
anti-HIST1H2AB antibody (N-Term)[Go to Product page](#)

3 Images

Overview

Quantity:	400 µL
Target:	HIST1H2AB
Binding Specificity:	AA 12-40, N-Term
Reactivity:	Human
Host:	Rabbit
Clonality:	Polyclonal
Application:	Western Blotting (WB), Flow Cytometry (FACS), Immunohistochemistry (Paraffin-embedded Sections) (IHC (p))

Product Details

Immunogen:	This HIST1H2AB antibody is generated from rabbits immunized with a KLH conjugated synthetic peptide between 12-40 amino acids from the N-terminal region of human HIST1H2AB.
Clone:	RB32983
Isotype:	Ig Fraction
Predicted Reactivity:	M, Rat, B, X, C, Pr, Zf
Purification:	This antibody is purified through a protein A column, followed by peptide affinity purification.

Target Details

Target:	HIST1H2AB
Alternative Name:	HIST1H2AB (HIST1H2AB Products)

Target Details

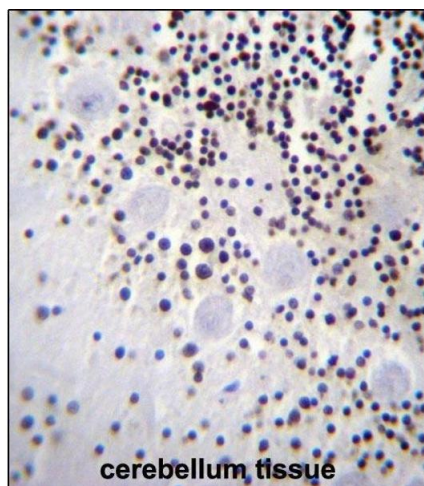
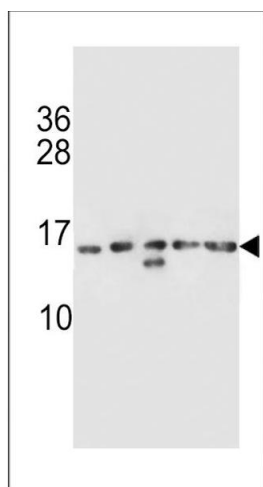
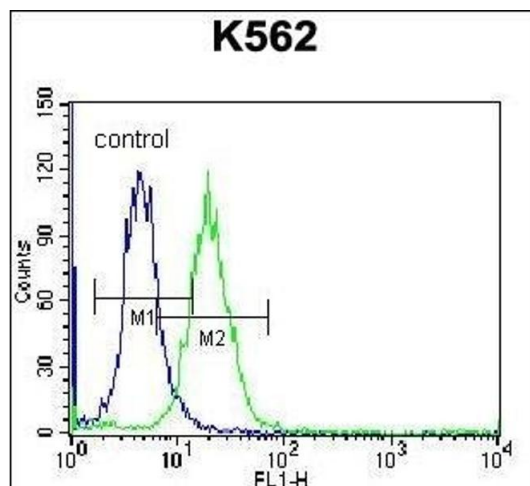
Background:	Histones are basic nuclear proteins that are responsible for the nucleosome structure of the chromosomal fiber in eukaryotes. This structure consists of approximately 146 bp of DNA wrapped around a nucleosome, an octamer composed of pairs of each of the four core histones (H2A, H2B, H3, and H4). The chromatin fiber is further compacted through the interaction of a linker histone, H1, with the DNA between the nucleosomes to form higher order chromatin structures. This gene is intronless and encodes a member of the histone H2A family. Transcripts from this gene lack polyA tails, instead, they contain a palindromic termination element. This gene is found in the large histone gene cluster on chromosome 6p22-p21.3.
Molecular Weight:	14135
Gene ID:	8335, 3012
NCBI Accession:	NP_003504 , NP_066390
UniProt:	P04908
Pathways:	Telomere Maintenance

Application Details

Application Notes:	WB: 1:1000. IHC-P: 1:10~50. FC: 1:10~50
Restrictions:	For Research Use only

Handling

Format:	Liquid
Buffer:	Purified polyclonal antibody supplied in PBS with 0.09 % (W/V) sodium azide.
Preservative:	Sodium azide
Precaution of Use:	This product contains Sodium azide: a POISONOUS AND HAZARDOUS SUBSTANCE which should be handled by trained staff only.
Storage:	4 °C, -20 °C
Storage Comment:	HIST1H2AB Antibody (N-term) can be refrigerated at 2-8 °C for up to 6 months. For long term storage, place the at -20 °C.
Expiry Date:	6 months



Flow Cytometry

Image 1. HIST1H2AB Antibody (N-term) (ABIN656986 and ABIN2846169) flow cytometric analysis of K562 cells (right histogram) compared to a negative control cell (left histogram). FITC-conjugated donkey-anti-rabbit secondary antibodies were used for the analysis.

Western Blotting

Image 2. HIST1H2AB Antibody (N-term) (ABIN656986 and ABIN2846169) western blot analysis in K562, CEM, MDA-M, NCI, MDA-M cell line lysates (35 µg/lane). This demonstrates the HIST1H2AB antibody detected the HIST1H2AB protein (arrow).

Immunohistochemistry (Paraffin-embedded Sections)

Image 3. HIST1H2AB Antibody (N-term) (ABIN656986 and ABIN2846169) immunohistochemistry analysis in formalin fixed and paraffin embedded human cerebellum tissue followed by peroxidase conjugation of the secondary antibody and DAB staining. This data demonstrates the use of HIST1H2AB Antibody (N-term) for immunohistochemistry. Clinical relevance has not been evaluated.