



[Go to Product page](#)

Datasheet for ABIN6569861

## anti-MOG antibody

### 2 Images

#### Overview

Quantity:	200 µL
Target:	MOG
Reactivity:	Human, Mouse
Host:	Rabbit
Clonality:	Polyclonal
Conjugate:	This MOG antibody is un-conjugated
Application:	Western Blotting (WB), Immunofluorescence (IF)

#### Product Details

Immunogen:	Recombinant protein of human MOG
Isotype:	IgG
Purification:	Affinity purification

#### Target Details

Target:	MOG
Alternative Name:	MOG ( <a href="#">MOG Products</a> )
Background:	<p>Synonyms: BTN6,BTNL11,MGC26137,MOG alpha 5,MOG alpha 6,MOG AluA,MOG AluB,MOG,MOG Ig AluB,MOG,MOGIG2,Myelin oligodendrocyte glycoprotein,Myelin-oligodendrocyte glycoprotein,NRCLP7</p> <p>Background: The product of this gene is a membrane protein expressed on the oligodendrocyte cell surface and the outermost surface of myelin sheaths. Due to this localization, it is a primary</p>

## Target Details

---

target antigen involved in immune-mediated demyelination. This protein may be involved in completion and maintenance of the myelin sheath and in cell-cell communication. Alternatively spliced transcript variants encoding different isoforms have been identified.

Molecular Weight: Observed\_MW: 24kDa  
Calculated\_MW: 12- 14kDa/19-33kDa

Gene ID: 4340

UniProt: [Q16653](#)

## Application Details

---

Application Notes: WB 1:500 - 1:2000 IF 1:50 - 1:200

Restrictions: For Research Use only

## Handling

---

Concentration: 1 mg/mL

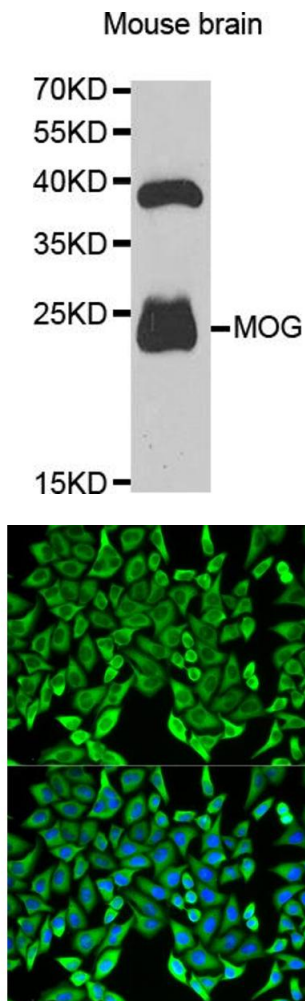
Buffer: Buffer: PBS with 0.02 % sodium azide, 50 % glycerol, pH 7.3.

Preservative: Sodium azide

Precaution of Use: This product contains Sodium azide: a POISONOUS AND HAZARDOUS SUBSTANCE which should be handled by trained staff only.

Storage: -20 °C

Storage Comment: Store at -20°C. Avoid freeze / thaw cycles.



### Western Blotting

**Image 1.** Western blot analysis of extracts of mouse brain, using MOG antibody.

### Immunofluorescence

**Image 2.** Immunofluorescence analysis of HeLa cells using MOG antibody.