

Datasheet for ABIN656991
anti-NAE1 antibody (AA 172-200)



[Go to Product page](#)

2 Images

Overview

Quantity:	400 µL
Target:	NAE1
Binding Specificity:	AA 172-200
Reactivity:	Human
Host:	Rabbit
Clonality:	Polyclonal
Conjugate:	This NAE1 antibody is un-conjugated
Application:	Western Blotting (WB), Immunohistochemistry (Paraffin-embedded Sections) (IHC (p))

Product Details

Immunogen:	This NAE1 antibody is generated from rabbits immunized with a KLH conjugated synthetic peptide between 172-200 amino acids from the Central region of human NAE1.
Clone:	RB33003
Isotype:	Ig Fraction
Predicted Reactivity:	Pr, Rat
Purification:	This antibody is purified through a protein A column, followed by peptide affinity purification.

Target Details

Target:	NAE1
Alternative Name:	NAE1 (NAE1 Products)

Target Details

Background: The protein encoded by this gene binds to the beta-amyloid precursor protein. Beta-amyloid precursor protein is a cell surface protein with signal-transducing properties, and it is thought to play a role in the pathogenesis of Alzheimer's disease. In addition, the encoded protein can form a heterodimer with UBE1C and bind and activate NEDD8, a ubiquitin-like protein. This protein is required for cell cycle progression through the S/M checkpoint. Three transcript variants encoding different isoforms have been found for this gene.

Molecular Weight: 60246

Gene ID: 8883

NCBI Accession: [NP_001018169](#), [NP_001018170](#), [NP_003896](#)

UniProt: [Q13564](#)

Application Details

Application Notes: WB: 1:1000. IHC-P: 1:10~50

Restrictions: For Research Use only

Handling

Format: Liquid

Buffer: Purified polyclonal antibody supplied in PBS with 0.09 % (W/V) sodium azide.

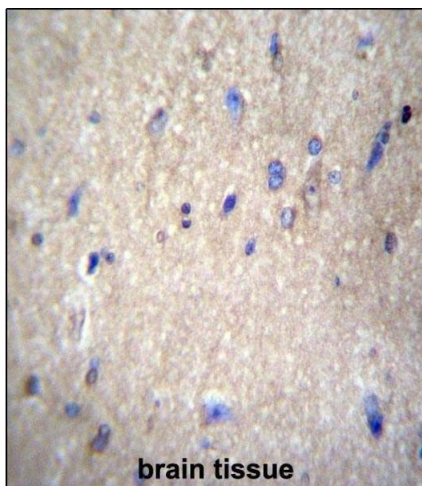
Preservative: Sodium azide

Precaution of Use: This product contains Sodium azide: a POISONOUS AND HAZARDOUS SUBSTANCE which should be handled by trained staff only.

Storage: 4 °C, -20 °C

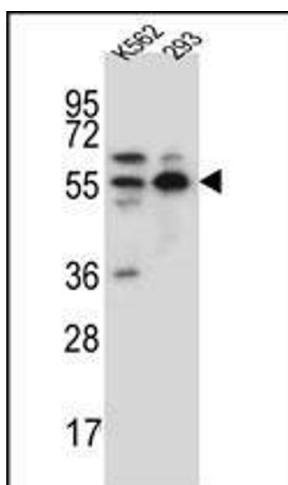
Storage Comment: NAE1 Antibody (Center) can be refrigerated at 2-8 °C for up to 6 months. For long term storage, place the at -20 °C.

Expiry Date: 6 months



Immunohistochemistry (Paraffin-embedded Sections)

Image 1. NAE1 Antibody (Center) (ABIN656991 and ABIN2846172) immunohistochemistry analysis in formalin fixed and paraffin embedded human brain tissue followed by peroxidase conjugation of the secondary antibody and DAB staining. This data demonstrates the use of NAE1 Antibody (Center) for immunohistochemistry. Clinical relevance has not been evaluated.



Western Blotting

Image 2. NAE1 Antibody (Center) (ABIN656991 and ABIN2846172) western blot analysis in K562,293 cell line lysates (35 µg/lane). This demonstrates the NAE1 antibody detected the NAE1 protein (arrow).