

Datasheet for ABIN656992
anti-MPP3 antibody (C-Term)[Go to Product page](#)

4 Images

Overview

Quantity:	400 µL
Target:	MPP3
Binding Specificity:	AA 406-434, C-Term
Reactivity:	Human
Host:	Rabbit
Clonality:	Polyclonal
Conjugate:	This MPP3 antibody is un-conjugated
Application:	Western Blotting (WB), Immunofluorescence (IF), Flow Cytometry (FACS)

Product Details

Immunogen:	This MPP3 antibody is generated from rabbits immunized with a KLH conjugated synthetic peptide between 406-434 amino acids from the C-terminal region of human MPP3.
Clone:	RB33005
Isotype:	Ig Fraction
Purification:	This antibody is purified through a protein A column, followed by peptide affinity purification.

Target Details

Target:	MPP3
Alternative Name:	MPP3 (MPP3 Products)
Background:	This gene product is a member of a family of membrane-associated proteins termed MAGUKs

Target Details

(membrane-associated guanylate kinase homologs). MAGUKs interact with the cytoskeleton and regulate cell proliferation, signaling pathways, and intracellular junctions. This protein contains a conserved sequence, called the SH3 (src homology 3) motif, found in several other proteins that associate with the cytoskeleton and are suspected to play important roles in signal transduction. Alternatively spliced transcript variants have been identified. One transcript variant is experimentally supported, but it doesn't encode a protein.

Molecular Weight: 66152

Gene ID: 4356

NCBI Accession: [NP_001923](#)

UniProt: [Q13368](#)

Application Details

Application Notes: IF: 1:10~50. WB: 1:1000. WB: 1:1000. FC: 1:10~50

Restrictions: For Research Use only

Handling

Format: Liquid

Buffer: Purified polyclonal antibody supplied in PBS with 0.09 % (W/V) sodium azide.

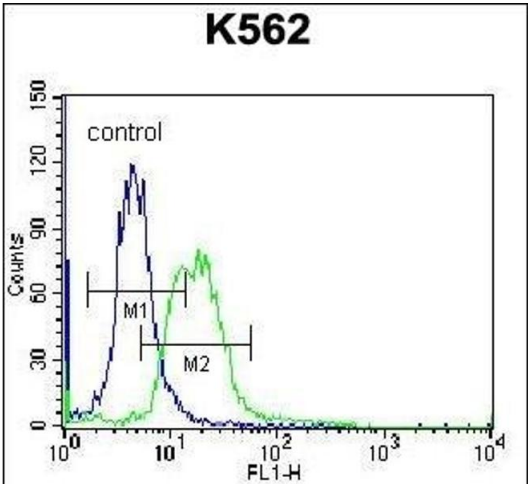
Preservative: Sodium azide

Precaution of Use: This product contains Sodium azide: a POISONOUS AND HAZARDOUS SUBSTANCE which should be handled by trained staff only.

Storage: 4 °C, -20 °C

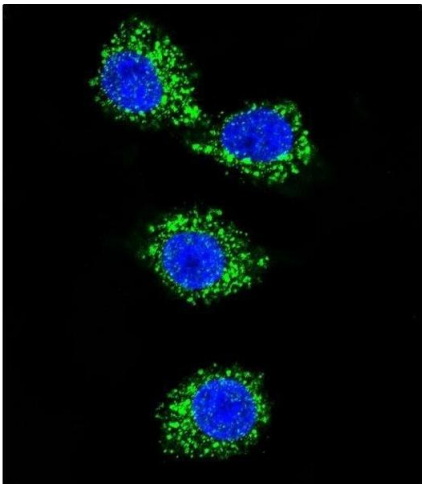
Storage Comment: MPP3 Antibody (C-term) can be refrigerated at 2-8 °C for up to 6 months. For long term storage, place the at -20 °C.

Expiry Date: 6 months



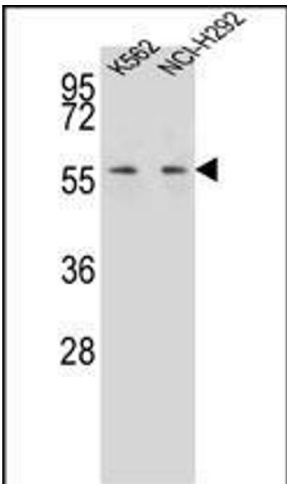
Flow Cytometry

Image 1. P3 Antibody (C-term) (ABIN656992 and ABIN2846173) flow cytometric analysis of K562 cells (right histogram) coared to a negative control cell (left histogram).FITC-conjugated donkey-anti-rabbit secondary antibodies were used for the analysis.



Immunofluorescence

Image 2. Confocal immunofluorescent analysis of P3 Antibody (C-term) (ABIN656992 and ABIN2846173) with MDA-M cell followed by Alexa Fluor 488-conjugated goat anti-rabbit IgG (green).DI was used to stain the cell nuclear (blue).



Western Blotting

Image 3. P3 Antibody (C-term) (ABIN656992 and ABIN2846173) western blot analysis in K562,NCI- cell line lysates (35 µg/lane).This demonstrates the P3 antibody detected the P3 protein (arrow).

Please check the [product details page](#) for more images. Overall 4 images are available for ABIN656992.