

Datasheet for ABIN656995  
**anti-LNX2 antibody (C-Term)**[2 Images](#)[1 Publication](#)[Go to Product page](#)

## Overview

Quantity:	400 µL
Target:	LNX2
Binding Specificity:	AA 551-579, C-Term
Reactivity:	Human
Host:	Rabbit
Clonality:	Polyclonal
Application:	Western Blotting (WB), Immunohistochemistry (Paraffin-embedded Sections) (IHC (p))

## Product Details

Immunogen:	This LNX2 antibody is generated from rabbits immunized with a KLH conjugated synthetic peptide between 551-579 amino acids from the C-terminal region of human LNX2.
Clone:	RB33008
Isotype:	Ig Fraction
Purification:	This antibody is purified through a protein A column, followed by peptide affinity purification.

## Target Details

Target:	LNX2
Alternative Name:	LNX2 ( <a href="#">LNX2 Products</a> )
Background:	LNX2 (Ligand of numb-protein X 2) is a multimodular protein that binds to NUMB via the NPXY motif. It may serve as a molecular scaffold that localizes unrelated, interacting proteins, such as NUMB, to specific subcellular sites.

## Target Details

Molecular Weight:	76004
Gene ID:	222484
NCBI Accession:	<a href="#">NP_699202</a>
UniProt:	<a href="#">Q8N448</a>

## Application Details

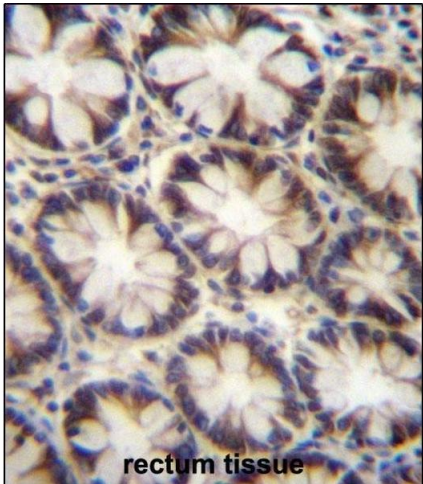
Application Notes:	WB: 1:1000. IHC-P: 1:10~50
Restrictions:	For Research Use only

## Handling

Format:	Liquid
Buffer:	Purified polyclonal antibody supplied in PBS with 0.09 % (W/V) sodium azide.
Preservative:	Sodium azide
Precaution of Use:	This product contains Sodium azide: a POISONOUS AND HAZARDOUS SUBSTANCE which should be handled by trained staff only.
Storage:	4 °C, -20 °C
Storage Comment:	LNx2 Antibody (C-term) can be refrigerated at 2-8 °C for up to 6 months. For long term storage, place the at -20 °C.
Expiry Date:	6 months

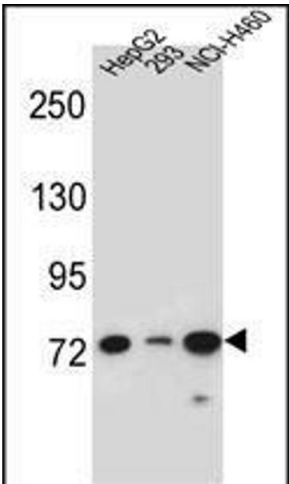
## Publications

Product cited in:	<p>Wu, Ma, Shan, Zhou, Li: "High expression of matrix metalloproteinases 16 is associated with the aggressive malignant behavior and poor survival outcome in colorectal carcinoma." in: <b>Scientific reports</b>, Vol. 7, pp. 46531, (2017) (<a href="#">PubMed</a>).</p> <p>Shen, Wang, Yu, Zhang, Qin: "MMP16 promotes tumor metastasis and indicates poor prognosis in hepatocellular carcinoma." in: <b>Oncotarget</b>, Vol. 8, Issue 42, pp. 72197-72204, (2017) (<a href="#">PubMed</a>).</p>
-------------------	---



**Immunohistochemistry (Paraffin-embedded Sections)**

**Image 1.** LNX2 Antibody (C-term) (ABIN656995 and ABIN2846175) immunohistochemistry analysis in formalin fixed and paraffin embedded human rectum tissue followed by peroxidase conjugation of the secondary antibody and DAB staining. This data demonstrates the use of LNX2 Antibody (C-term) for immunohistochemistry. Clinical relevance has not been evaluated.



**Western Blotting**

**Image 2.** LNX2 Antibody (C-term) (ABIN656995 and ABIN2846175) western blot analysis in HepG2, 293, NCI- cell line lysates (35 µg/lane). This demonstrates the LNX2 antibody detected the LNX2 protein (arrow).