



[Go to Product page](#)

Datasheet for ABIN656999
anti-GNLY antibody (N-Term)

1 Image

Overview

Quantity:	400 µL
Target:	GNLY
Binding Specificity:	AA 14-42, N-Term
Reactivity:	Human
Host:	Rabbit
Clonality:	Polyclonal
Conjugate:	This GNLY antibody is un-conjugated
Application:	Western Blotting (WB)

Product Details

Immunogen:	This GNLY antibody is generated from rabbits immunized with a KLH conjugated synthetic peptide between 14-42 amino acids from the N-terminal region of human GNLY.
Clone:	RB33032
Isotype:	Ig Fraction
Purification:	This antibody is purified through a protein A column, followed by peptide affinity purification.

Target Details

Target:	GNLY
Alternative Name:	GNLY (GNLY Products)
Background:	The product of this gene is a member of the saposin-like protein (SAPLIP) family and is located

Target Details

in the cytotoxic granules of T cells, which are released upon antigen stimulation. This protein is present in cytotoxic granules of cytotoxic T lymphocytes and natural killer cells, and it has antimicrobial activity against *M. tuberculosis* and other organisms. Alternatively spliced transcript variants encoding different isoforms have been identified.

Molecular Weight: 16374

Gene ID: 10578

NCBI Accession: [NP_006424](#), [NP_036615](#)

UniProt: [P22749](#)

Application Details

Application Notes: WB: 1:1000

Restrictions: For Research Use only

Handling

Format: Liquid

Buffer: Purified polyclonal antibody supplied in PBS with 0.09 % (W/V) sodium azide.

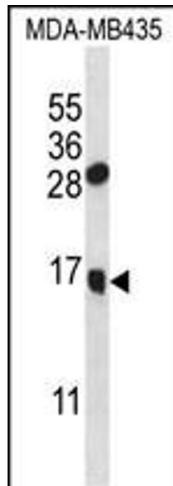
Preservative: Sodium azide

Precaution of Use: This product contains Sodium azide: a POISONOUS AND HAZARDOUS SUBSTANCE which should be handled by trained staff only.

Storage: 4 °C,-20 °C

Storage Comment: GNLY Antibody (N-term) can be refrigerated at 2-8 °C for up to 6 months. For long term storage, place the at -20 °C.

Expiry Date: 6 months



Western Blotting

Image 1. GNLY Antibody (N-term) (ABIN656999 and ABIN2846178) western blot analysis in MDA-M cell line lysates (35 µg/lane). This demonstrates the GNLY antibody detected the GNLY protein (arrow).