

Datasheet for ABIN657007
anti-ABHD2 antibody (AA 263-292)[Go to Product page](#)

2 Images

Overview

Quantity:	400 µL
Target:	ABHD2
Binding Specificity:	AA 263-292
Reactivity:	Human
Host:	Rabbit
Clonality:	Polyclonal
Conjugate:	This ABHD2 antibody is un-conjugated
Application:	Western Blotting (WB), Immunohistochemistry (Paraffin-embedded Sections) (IHC (p))

Product Details

Immunogen:	This ABHD2 antibody is generated from rabbits immunized with a KLH conjugated synthetic peptide between 263-292 amino acids from the Central region of human ABHD2.
Clone:	RB33057
Isotype:	Ig Fraction
Predicted Reactivity:	B, Pr, M
Purification:	This antibody is purified through a protein A column, followed by peptide affinity purification.

Target Details

Target:	ABHD2
Alternative Name:	ABHD2 (ABHD2 Products)

Target Details

Background:	This gene encodes a protein containing an alpha/beta hydrolase fold, which is a catalytic domain found in a very wide range of enzymes. The function of this protein has not been determined. Alternative splicing of this gene results in two transcript variants encoding the same protein. [provided by RefSeq].
-------------	---

Molecular Weight:	48315
-------------------	-------

Gene ID:	11057
----------	-------

NCBI Accession:	NP_008942 , NP_690888
-----------------	---

UniProt:	P08910
----------	------------------------

Application Details

Application Notes:	WB: 1:1000. IHC-P: 1:10~50
--------------------	----------------------------

Restrictions:	For Research Use only
---------------	-----------------------

Handling

Format:	Liquid
---------	--------

Buffer:	Purified polyclonal antibody supplied in PBS with 0.09 % (W/V) sodium azide.
---------	--

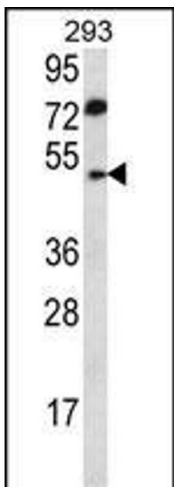
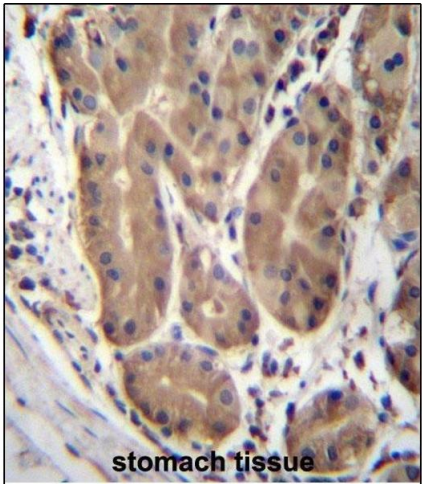
Preservative:	Sodium azide
---------------	--------------

Precaution of Use:	This product contains Sodium azide: a POISONOUS AND HAZARDOUS SUBSTANCE which should be handled by trained staff only.
--------------------	--

Storage:	4 °C,-20 °C
----------	-------------

Storage Comment:	ABHD2 Antibody (Center) can be refrigerated at 2-8 °C for up to 6 months. For long term storage, place the at -20 °C.
------------------	---

Expiry Date:	6 months
--------------	----------



Immunohistochemistry (Paraffin-embedded Sections)

Image 1. ABHD2 Antibody (Center) (ABIN657007 and ABIN2846187) immunohistochemistry analysis in formalin fixed and paraffin embedded human stomach tissue followed by peroxidase conjugation of the secondary antibody and DAB staining. This data demonstrates the use of ABHD2 Antibody (Center) for immunohistochemistry. Clinical relevance has not been evaluated.

Western Blotting

Image 2. ABHD2 Antibody (Center) (ABIN657007 and ABIN2846187) western blot analysis in 293 cell line lysates (35 µg/lane). This demonstrates the ABHD2 antibody detected the ABHD2 protein (arrow).