

Datasheet for ABIN6570116

anti-COL1A2 antibody[Go to Product page](#)**3** Images

Overview

Quantity:	200 µL
Target:	COL1A2
Reactivity:	Mouse, Rat
Host:	Rabbit
Clonality:	Polyclonal
Conjugate:	This COL1A2 antibody is un-conjugated
Application:	Western Blotting (WB), Immunohistochemistry (IHC)

Product Details

Immunogen:	A synthetic peptide of human COL1A2
Isotype:	IgG
Purification:	Affinity purification

Target Details

Target:	COL1A2
Alternative Name:	COL1A2 (COL1A2 Products)
Background:	<p>Synonyms: Alpha 2 collagen type I, Alpha 2 type I collagen, Alpha 2 type I procollagen, Alpha 2(I) collagen, Alpha 2(I) procollagen, Alpha-2 type I collagen, CO1A2, COL1A2, Collagen alpha 2(I) chain, Collagen alpha-2(I) chain, Collagen I alpha 2 polypeptide, Collagen of skin tendon and bone alpha 2 chain, Collagen type I alpha 2, OI4, Osteogenesis imperfecta type IV, Type I procollagen</p> <p>Background: This gene encodes the pro-alpha2 chain of type I collagen whose triple helix</p>

Target Details

comprises two alpha1 chains and one alpha2 chain. Type I is a fibril-forming collagen found in most connective tissues and is abundant in bone, cornea, dermis and tendon. Mutations in this gene are associated with osteogenesis imperfecta types I-IV, Ehlers-Danlos syndrome type VIIB, recessive Ehlers-Danlos syndrome Classical type, idiopathic osteoporosis, and atypical Marfan syndrome. Symptoms associated with mutations in this gene, however, tend to be less severe than mutations in the gene for the alpha1 chain of type I collagen (COL1A1) reflecting the different role of alpha2 chains in matrix integrity. Three transcripts, resulting from the use of alternate polyadenylation signals, have been identified for this gene.

Molecular Weight:	Observed_MW: 118kDa Calculated_MW: 129kDa
-------------------	--

Gene ID:	1278
----------	------

UniProt:	P08123
----------	------------------------

Application Details

Application Notes:	WB 1:500 - 1:2000 IHC 1:50 - 1:200
--------------------	------------------------------------

Restrictions:	For Research Use only
---------------	-----------------------

Handling

Concentration:	1 mg/mL
----------------	---------

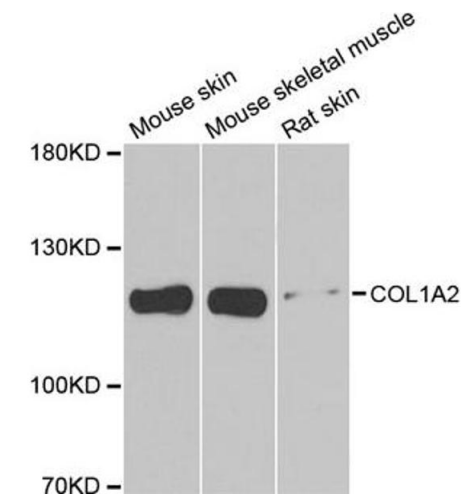
Buffer:	Buffer: PBS with 0.02 % sodium azide, 50 % glycerol, pH 7.3.
---------	--

Preservative:	Sodium azide
---------------	--------------

Precaution of Use:	This product contains Sodium azide: a POISONOUS AND HAZARDOUS SUBSTANCE which should be handled by trained staff only.
--------------------	--

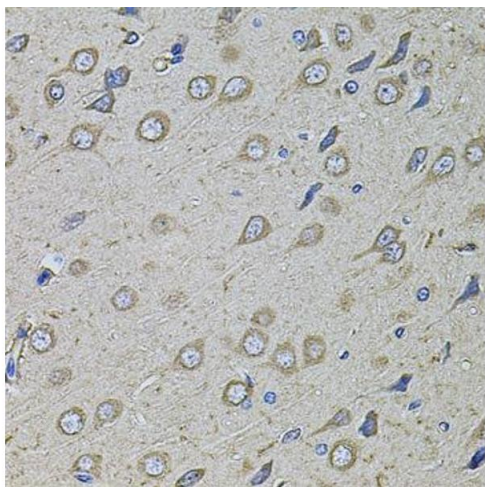
Storage:	-20 °C
----------	--------

Storage Comment:	Store at -20°C. Avoid freeze / thaw cycles.
------------------	---



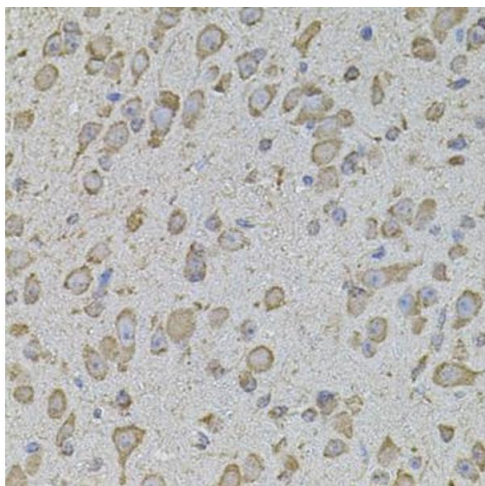
Western Blotting

Image 1. Western blot analysis of extracts of various cell lines, using COL1A2 antibody.



Immunohistochemistry

Image 2. Immunohistochemistry of paraffin-embedded rat brain using COL1A2 antibody.



Immunohistochemistry

Image 3. Immunohistochemistry of paraffin-embedded mouse brain using COL1A2 antibody.