



[Go to Product page](#)

Datasheet for ABIN657016  
**anti-ADSS antibody (C-Term)**

1 Image

### Overview

Quantity:	400 µL
Target:	ADSS
Binding Specificity:	AA 396-422, C-Term
Reactivity:	Human
Host:	Rabbit
Clonality:	Polyclonal
Application:	Western Blotting (WB)

### Product Details

Immunogen:	This ADSS antibody is generated from rabbits immunized with a KLH conjugated synthetic peptide between 396-422 amino acids from the C-terminal region of human ADSS.
Clone:	RB21229
Isotype:	Ig Fraction
Purification:	This antibody is purified through a protein A column, followed by peptide affinity purification.

### Target Details

Target:	ADSS
Alternative Name:	<a href="#">ADSS (ADSS Products)</a>
Background:	This gene encodes the enzyme adenylosuccinate synthetase which catalyzes the first committed step in the conversion of inosine monophosphate to adenosine monophosphate. A pseudogene of this gene is found on chromosome 17.

## Target Details

Molecular Weight:	50097
NCBI Accession:	<a href="#">NP_001117</a>
UniProt:	<a href="#">P30520</a>
Pathways:	<a href="#">Ribonucleoside Biosynthetic Process</a>

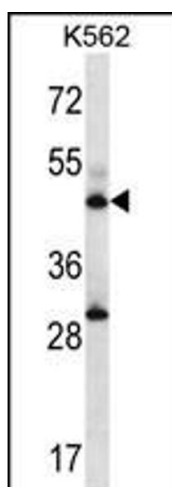
## Application Details

Application Notes:	WB: 1:1000
Restrictions:	For Research Use only

## Handling

Format:	Liquid
Buffer:	Purified polyclonal antibody supplied in PBS with 0.09 % (W/V) sodium azide.
Preservative:	Sodium azide
Precaution of Use:	This product contains Sodium azide: a POISONOUS AND HAZARDOUS SUBSTANCE which should be handled by trained staff only.
Storage:	4 °C,-20 °C
Expiry Date:	6 months

## Images



### Western Blotting

**Image 1.** ADSS Antibody (C-term) (ABIN657016 and ABIN2846195) western blot analysis in K562 cell line lysates (35 µg/lane). This demonstrates the ADSS antibody detected the ADSS protein (arrow).