

Datasheet for ABIN6570312
anti-CLEC12A antibody



[Go to Product page](#)

1 Image

Overview

Quantity:	200 µL
Target:	CLEC12A
Reactivity:	Human, Mouse, Rat
Host:	Rabbit
Clonality:	Polyclonal
Conjugate:	This CLEC12A antibody is un-conjugated
Application:	Western Blotting (WB)

Product Details

Immunogen:	Recombinant protein of human CLEC12A
Isotype:	IgG
Purification:	Affinity purification

Target Details

Target:	CLEC12A
Alternative Name:	CLEC12A (CLEC12A Products)
Background:	<p>Synonyms: C-type lectin domain family 12 member A,C-type lectin-like molecule 1,CL12A,CLEC12A,CLL-1,DCAL-2,Dendritic cell-associated lectin 2,MICL,Myeloid inhibitory C-type lectin-like receptor</p> <p>Background: This gene encodes a member of the C-type lectin/C-type lectin-like domain (CTL/CTLD) superfamily. Members of this family share a common protein fold and have</p>

Target Details

diverse functions, such as cell adhesion, cell-cell signaling, glycoprotein turnover, and roles in inflammation and immune response. The protein encoded by this gene is a negative regulator of granulocyte and monocyte function. Several alternatively spliced transcript variants of this gene have been described, but the full-length nature of some of these variants has not been determined. This gene is closely linked to other CTL/CTLD superfamily members in the natural killer gene complex region on chromosome 12p13.

Molecular Weight: Observed_MW: 32-35kDa
Calculated_MW: 8kDa/24kDa/27kDa/30kDa/32kDa

Gene ID: 160364

UniProt: [Q5QGZ9](#)

Application Details

Application Notes: WB 1:500 - 1:2000

Restrictions: For Research Use only

Handling

Concentration: 1 mg/mL

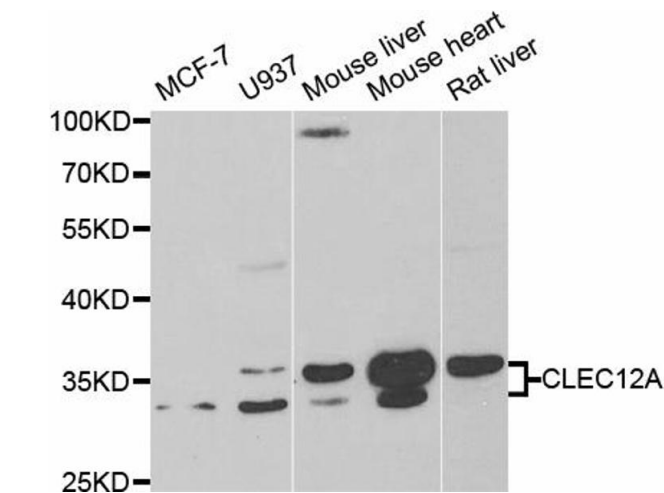
Buffer: Buffer: PBS with 0.02 % sodium azide, 50 % glycerol, pH 7.3.

Preservative: Sodium azide

Precaution of Use: This product contains Sodium azide: a POISONOUS AND HAZARDOUS SUBSTANCE which should be handled by trained staff only.

Storage: -20 °C

Storage Comment: Store at -20°C. Avoid freeze / thaw cycles.



Western Blotting

Image 1. Western blot analysis of extracts of various cell lines, using CLEC12A antibody.