



[Go to Product page](#)

Datasheet for ABIN657035
anti-LSM12B antibody (C-Term)

2 Images

Overview

Quantity:	400 µL
Target:	LSM12B
Binding Specificity:	AA 146-174, C-Term
Reactivity:	Mouse
Host:	Rabbit
Clonality:	Polyclonal
Conjugate:	This LSM12B antibody is un-conjugated
Application:	Western Blotting (WB), Immunohistochemistry (Paraffin-embedded Sections) (IHC (p))

Product Details

Immunogen:	This LSM12 antibody is generated from rabbits immunized with a KLH conjugated synthetic peptide between 146-174 amino acids from the C-terminal region of human LSM12.
Clone:	RB32009
Isotype:	Ig Fraction
Predicted Reactivity:	Zf, B, C
Purification:	This antibody is purified through a protein A column, followed by peptide affinity purification.

Target Details

Target:	LSM12B
Alternative Name:	LSM12 (LSM12B Products)

Target Details

Background:	LSM12 belongs to the LSM12 family. The exact function of LSM12 is not known.
Molecular Weight:	21701
NCBI Accession:	NP_689557
UniProt:	Q3MHD2

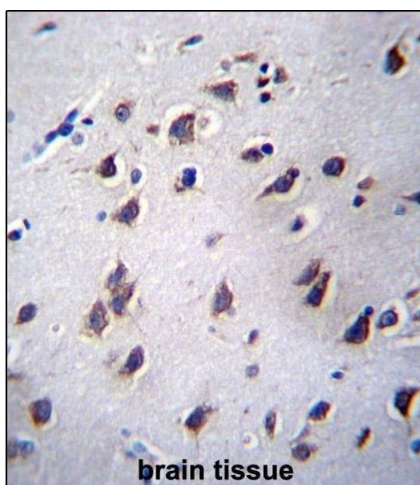
Application Details

Application Notes:	WB: 1:1000. IHC-P: 1:10~50
Restrictions:	For Research Use only

Handling

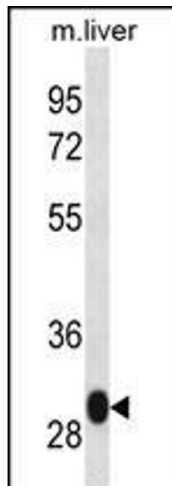
Format:	Liquid
Buffer:	Purified polyclonal antibody supplied in PBS with 0.09 % (W/V) sodium azide.
Preservative:	Sodium azide
Precaution of Use:	This product contains Sodium azide: a POISONOUS AND HAZARDOUS SUBSTANCE which should be handled by trained staff only.
Storage:	4 °C,-20 °C
Expiry Date:	6 months

Images



Immunohistochemistry (Paraffin-embedded Sections)

Image 1. LSM12 Antibody (C-term) (ABIN657035 and ABIN2846208) immunohistochemistry analysis in formalin fixed and paraffin embedded human brain tissue followed by peroxidase conjugation of the secondary antibody and DAB staining. This data demonstrates the use of LSM12 Antibody (C-term) for immunohistochemistry. Clinical relevance has not been evaluated.



Western Blotting

Image 2. LSM12 Antibody (C-term) (ABIN657035 and ABIN2846208) western blot analysis in mouse liver tissue lysates (35 µg/lane). This demonstrates the LSM12 antibody detected the LSM12 protein (arrow).