

Datasheet for ABIN657042  
**anti-PPP1R15B antibody (C-Term)**

## 2 Images

[Go to Product page](#)

## Overview

Quantity:	400 µL
Target:	PPP1R15B
Binding Specificity:	AA 494-522, C-Term
Reactivity:	Human
Host:	Rabbit
Clonality:	Polyclonal
Conjugate:	This PPP1R15B antibody is un-conjugated
Application:	Western Blotting (WB), Immunohistochemistry (Paraffin-embedded Sections) (IHC (p))

## Product Details

Immunogen:	This PR15B antibody is generated from rabbits immunized with a KLH conjugated synthetic peptide between 494-522 amino acids from the C-terminal region of human PR15B.
Clone:	RB32305
Isotype:	Ig Fraction
Purification:	This antibody is purified through a protein A column, followed by peptide affinity purification.

## Target Details

Target:	PPP1R15B
Alternative Name:	PR15B ( <a href="#">PPP1R15B Products</a> )
Background:	PPP1R15B promotes dephosphorylation of the transcription initiation factor EIF2-alpha

## Target Details

(EIF2S1, MIM 603907) through recruitment of protein phosphatase-1 (PP1) catalytic subunits (see MIM 176875) (Harding et al., 2009 [PubMed 19181853]).[supplied by OMIM].

Molecular Weight: 79152

NCBI Accession: [NP\\_116222](#)

UniProt: [Q5SWA1](#)

Pathways: [ER-Nucleus Signaling](#)

## Application Details

Application Notes: WB: 1:1000. IHC-P: 1:10~50

Restrictions: For Research Use only

## Handling

Format: Liquid

Buffer: Purified polyclonal antibody supplied in PBS with 0.09 % (W/V) sodium azide.

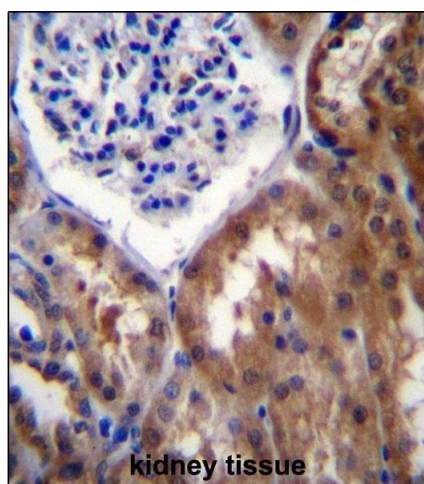
Preservative: Sodium azide

Precaution of Use: This product contains Sodium azide: a POISONOUS AND HAZARDOUS SUBSTANCE which should be handled by trained staff only.

Storage: 4 °C,-20 °C

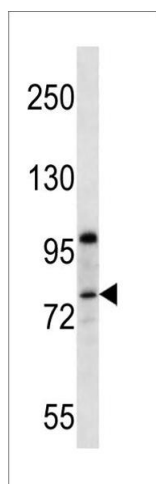
Expiry Date: 6 months

## Images



### Immunohistochemistry (Paraffin-embedded Sections)

**Image 1.** PR15B Antibdy (C-term) (ABIN657042 and ABIN2837885) immunohistochemistry analysis in formalin fixed and paraffin embedded human kidney tissue followed by peroxidase conjugation of the secondary antibody and DAB staining. This data demonstrates the use of PR15B Antibdy (C-term) for immunohistochemistry. Clinical relevance has not been evaluated.



### Western Blotting

**Image 2.** PR15B Antibody (C-term) (ABIN657042 and ABIN2837885) western blot analysis in MCF-7 cell line lysates (35 µg/lane). This demonstrates the PR15B antibody detected the PR15B protein (arrow).