

Datasheet for ABIN657048  
**anti-PYDC1 antibody (AA 13-42)**[Go to Product page](#)

## 1 Image

## Overview

Quantity:	400 µL
Target:	PYDC1
Binding Specificity:	AA 13-42
Reactivity:	Human
Host:	Rabbit
Clonality:	Polyclonal
Application:	Western Blotting (WB)

## Product Details

Immunogen:	This PYDC1 antibody is generated from rabbits immunized with a KLH conjugated synthetic peptide between 13-42 amino acids from the Central region of human PYDC1.
Clone:	RB32352
Isotype:	Ig Fraction
Purification:	This antibody is purified through a protein A column, followed by peptide affinity purification.

## Target Details

Target:	PYDC1
Alternative Name:	PYDC1 ( <a href="#">PYDC1 Products</a> )
Background:	PYDC1 associates with apoptosis-associated specklike protein containing a CARD domain (ASC) and modulates its ability to collaborate with pyrin and cryopyrin in NF-kappa-B and pro-caspase-1 activation. Suppresses kinase activity of NF-kappa-B inhibitor kinase (IKK) complex,

## Target Details

	expression of NF-kappa-B inducible genes and inhibits NF-kappa-B activation by cytokines and LPS.
Molecular Weight:	10107
NCBI Accession:	<a href="#">NP_690865</a>
UniProt:	<a href="#">Q8WXC3</a>

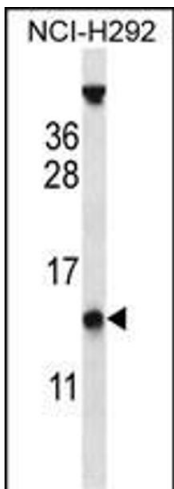
## Application Details

Application Notes:	WB: 1:1000
Restrictions:	For Research Use only

## Handling

Format:	Liquid
Buffer:	Purified polyclonal antibody supplied in PBS with 0.09 % (W/V) sodium azide.
Preservative:	Sodium azide
Precaution of Use:	This product contains Sodium azide: a POISONOUS AND HAZARDOUS SUBSTANCE which should be handled by trained staff only.
Storage:	4 °C,-20 °C
Expiry Date:	6 months

## Images



### Western Blotting

**Image 1.** PYDC1 Antibody (Center) (ABIN657048 and ABIN2846215) western blot analysis in NCI- cell line lysates (35 µg/lane). This demonstrates the PYDC1 antibody detected the PYDC1 protein (arrow).