

Datasheet for ABIN657050
anti-RPL27 antibody (C-Term)[Go to Product page](#)

3 Images

Overview

Quantity:	400 µL
Target:	RPL27
Binding Specificity:	AA 91-120, C-Term
Reactivity:	Human, Mouse
Host:	Rabbit
Clonality:	Polyclonal
Conjugate:	This RPL27 antibody is un-conjugated
Application:	Western Blotting (WB), Immunohistochemistry (Paraffin-embedded Sections) (IHC (p))

Product Details

Immunogen:	This RPL27 antibody is generated from rabbits immunized with a KLH conjugated synthetic peptide between 91-120 amino acids from the C-terminal region of human RPL27.
Clone:	RB32393
Isotype:	Ig Fraction
Predicted Reactivity:	B, C, Zf, Pr, Pig, Rat
Purification:	This antibody is purified through a protein A column, followed by peptide affinity purification.

Target Details

Target:	RPL27
Alternative Name:	RPL27 (RPL27 Products)

Target Details

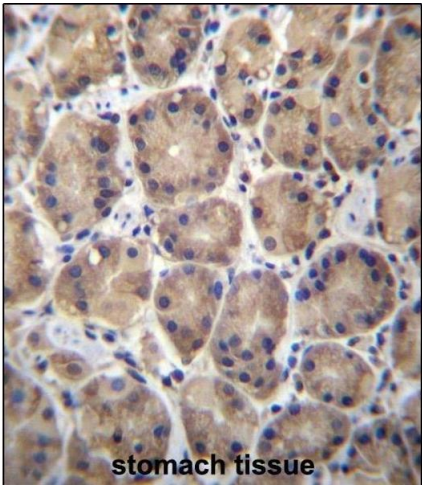
Background:	Ribosomes, the organelles that catalyze protein synthesis, consist of a small 40S subunit and a large 60S subunit. Together these subunits are composed of 4 RNA species and approximately 80 structurally distinct proteins. This gene encodes a ribosomal protein that is a component of the 60S subunit. The protein belongs to the L27E family of ribosomal proteins. It is located in the cytoplasm. As is typical for genes encoding ribosomal proteins, there are multiple processed pseudogenes of this gene dispersed through the genome.
Molecular Weight:	15798
NCBI Accession:	NP_000979
UniProt:	P61353

Application Details

Application Notes:	WB: 1:4000. WB: 1:1000. IHC-P: 1:10~50
Restrictions:	For Research Use only

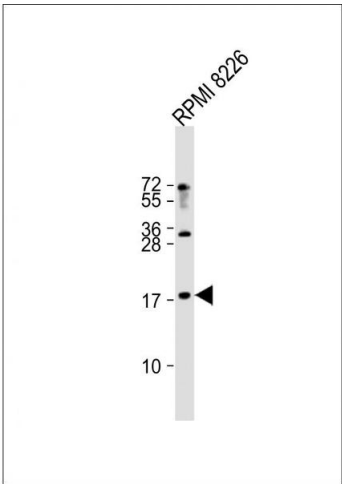
Handling

Format:	Liquid
Buffer:	Purified polyclonal antibody supplied in PBS with 0.09 % (W/V) sodium azide.
Preservative:	Sodium azide
Precaution of Use:	This product contains Sodium azide: a POISONOUS AND HAZARDOUS SUBSTANCE which should be handled by trained staff only.
Storage:	4 °C,-20 °C
Expiry Date:	6 months



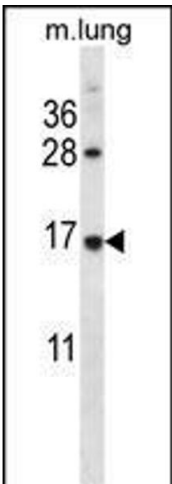
Immunohistochemistry (Paraffin-embedded Sections)

Image 1. RPL27 Antibody (C-term) (ABIN657050 and ABIN2846217) immunohistochemistry analysis in formalin fixed and paraffin embedded human stomach tissue followed by peroxidase conjugation of the secondary antibody and DAB staining. This data demonstrates the use of RPL27 Antibody (C-term) for immunohistochemistry. Clinical relevance has not been evaluated.



Western Blotting

Image 2. Anti-RPL27 Antibody (C-term) at 1:4000 dilution + RI 8226 whole cell lysate Lysates/proteins at 20 µg per lane. Secondary Goat Anti-Rabbit IgG, (H+L), Peroxidase conjugated at 1/10000 dilution. Predicted band size : 16 kDa Blocking/Dilution buffer: 5 % NFDM/TBST.



Western Blotting

Image 3. RPL27 Antibody (C-term) (ABIN657050 and ABIN2846217) western blot analysis in mouse lung tissue lysates (35 µg/lane). This demonstrates the RPL27 antibody detected the RPL27 protein (arrow).