

Datasheet for ABIN657052  
**anti-SEC63 antibody (N-Term)**[Go to Product page](#)

## 2 Images

## Overview

Quantity:	400 µL
Target:	SEC63
Binding Specificity:	AA 139-168, N-Term
Reactivity:	Human
Host:	Rabbit
Clonality:	Polyclonal
Conjugate:	This SEC63 antibody is un-conjugated
Application:	Western Blotting (WB), Immunohistochemistry (Paraffin-embedded Sections) (IHC (p))

## Product Details

Immunogen:	This SEC63 antibody is generated from rabbits immunized with a KLH conjugated synthetic peptide between 139-168 amino acids from the N-terminal region of human SEC63.
Clone:	RB32397
Isotype:	Ig Fraction
Predicted Reactivity:	M
Purification:	This antibody is purified through a protein A column, followed by peptide affinity purification.

## Target Details

Target:	SEC63
Alternative Name:	SEC63 ( <a href="#">SEC63 Products</a> )

## Target Details

**Background:** The Sec61 complex is the central component of the protein translocation apparatus of the endoplasmic reticulum (ER) membrane. The protein encoded by this gene and SEC62 protein are found to be associated with ribosome-free SEC61 complex. It is speculated that Sec61-Sec62-Sec63 may perform post-translational protein translocation into the ER. The Sec61-Sec62-Sec63 complex might also perform the backward transport of ER proteins that are subject to the ubiquitin-proteasome-dependent degradation pathway. The encoded protein is an integral membrane protein located in the rough ER.

**Molecular Weight:** 87997

**NCBI Accession:** [NP\\_009145](#)

**UniProt:** [Q9UGP8](#)

**Pathways:** [ER-Nucleus Signaling](#)

## Application Details

**Application Notes:** WB: 1:1000. IHC-P: 1:10~50

**Restrictions:** For Research Use only

## Handling

**Format:** Liquid

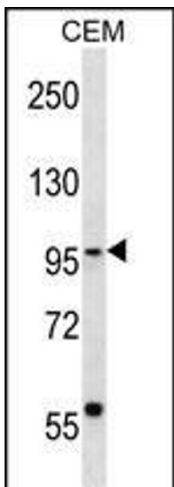
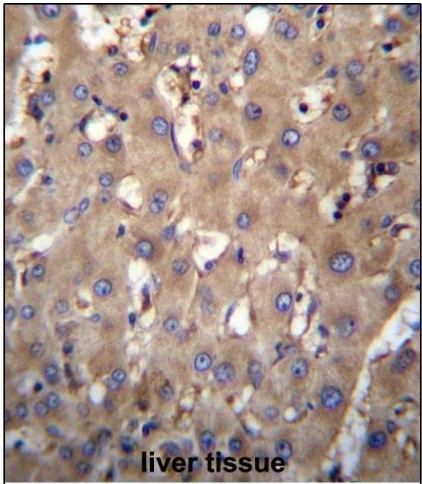
**Buffer:** Purified polyclonal antibody supplied in PBS with 0.09 % (W/V) sodium azide.

**Preservative:** Sodium azide

**Precaution of Use:** This product contains Sodium azide: a POISONOUS AND HAZARDOUS SUBSTANCE which should be handled by trained staff only.

**Storage:** 4 °C,-20 °C

**Expiry Date:** 6 months



**Immunohistochemistry (Paraffin-embedded Sections)**

**Image 1.** SEC63 Antibody (N-term) (ABIN657052 and ABIN2846219) immunohistochemistry analysis in formalin fixed and paraffin embedded human liver tissue followed by peroxidase conjugation of the secondary antibody and DAB staining. This data demonstrates the use of SEC63 Antibody (N-term) for immunohistochemistry. Clinical relevance has not been evaluated.

**Western Blotting**

**Image 2.** SEC63 Antibody (N-term) (ABIN657052 and ABIN2846219) western blot analysis in CEM cell line lysates (35 µg/lane). This demonstrates the SEC63 antibody detected the SEC63 protein (arrow).