

Datasheet for ABIN657055  
**anti-REPS2 antibody (N-Term)**

## 2 Images

[Go to Product page](#)

## Overview

Quantity:	400 µL
Target:	REPS2
Binding Specificity:	AA 153-182, N-Term
Reactivity:	Human, Mouse
Host:	Rabbit
Clonality:	Polyclonal
Conjugate:	This REPS2 antibody is un-conjugated
Application:	Western Blotting (WB), Immunohistochemistry (Paraffin-embedded Sections) (IHC (p))

## Product Details

Immunogen:	This REPS2 antibody is generated from rabbits immunized with a KLH conjugated synthetic peptide between 153-182 amino acids from the N-terminal region of human REPS2.
Clone:	RB32411
Isotype:	Ig Fraction
Purification:	This antibody is purified through a protein A column, followed by peptide affinity purification.

## Target Details

Target:	REPS2
Alternative Name:	REPS2 ( <a href="#">REPS2 Products</a> )
Background:	The product of this gene is part of a protein complex that regulates the endocytosis of growth

## Target Details

factor receptors. The encoded protein directly interacts with a GTPase activating protein that functions downstream of the small G protein Ral. Its expression can negatively affect receptor internalization and inhibit growth factor signaling. Multiple transcript variants encoding different isoforms have been found for this gene.

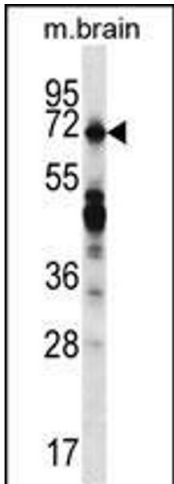
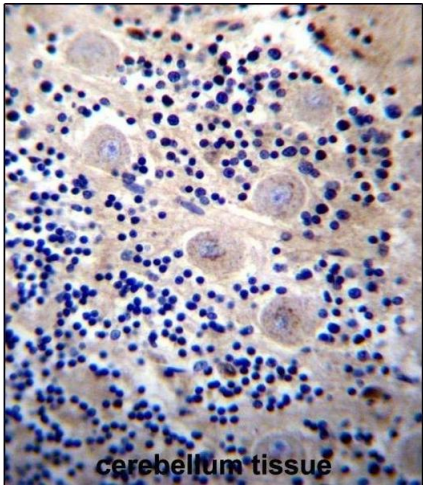
Molecular Weight:	71534
NCBI Accession:	<a href="#">NP_001074444</a> , <a href="#">NP_004717</a>
UniProt:	<a href="#">Q8NFH8</a>
Pathways:	<a href="#">EGFR Signaling Pathway</a>

## Application Details

Application Notes:	WB: 1:1000. IHC-P: 1:10~50
Restrictions:	For Research Use only

## Handling

Format:	Liquid
Buffer:	Purified polyclonal antibody supplied in PBS with 0.09 % (W/V) sodium azide.
Preservative:	Sodium azide
Precaution of Use:	This product contains Sodium azide: a POISONOUS AND HAZARDOUS SUBSTANCE which should be handled by trained staff only.
Storage:	4 °C,-20 °C
Expiry Date:	6 months



**Immunohistochemistry (Paraffin-embedded Sections)**

**Image 1.** REPS2 Antibody (N-term) (ABIN657055 and ABIN2846222) immunohistochemistry analysis in formalin fixed and paraffin embedded human cerebellum tissue followed by peroxidase conjugation of the secondary antibody and DAB staining. This data demonstrates the use of REPS2 Antibody (N-term) for immunohistochemistry. Clinical relevance has not been evaluated.

**Western Blotting**

**Image 2.** REPS2 Antibody (N-term) (ABIN657055 and ABIN2846222) western blot analysis in mouse brain tissue lysates (35 µg/lane). This demonstrates the REPS2 antibody detected the REPS2 protein (arrow).