

Datasheet for ABIN657059  
**anti-GPRASP2 antibody (N-Term)**[Go to Product page](#)

## 2 Images

## Overview

Quantity:	400 µL
Target:	GPRASP2
Binding Specificity:	AA 234-263, N-Term
Reactivity:	Mouse
Host:	Rabbit
Clonality:	Polyclonal
Conjugate:	This GPRASP2 antibody is un-conjugated
Application:	Western Blotting (WB), Immunohistochemistry (Paraffin-embedded Sections) (IHC (p))

## Product Details

Immunogen:	This GPRASP2 antibody is generated from rabbits immunized with a KLH conjugated synthetic peptide between 234-263 amino acids from the N-terminal region of human GPRASP2.
Clone:	RB32485
Isotype:	Ig Fraction
Purification:	This antibody is purified through a protein A column, followed by peptide affinity purification.

## Target Details

Target:	GPRASP2
Alternative Name:	GPRASP2 ( <a href="#">GPRASP2 Products</a> )
Background:	The protein encoded by this gene is a member of a family that regulates the activity of G

## Target Details

protein-coupled receptors (GPCRs). The encoded protein has been shown to be capable of interacting with several GPCRs, including the M1 muscarinic acetylcholine receptor and the calcitonin receptor. Several transcript variants encoding the same protein have been found for this gene. [provided by RefSeq].

Molecular Weight: 93773

NCBI Accession: [NP\\_001004051](#), [NP\\_001171803](#), [NP\\_001171804](#), [NP\\_001171805](#), [NP\\_001186747](#), [NP\\_612446](#)

UniProt: [Q96D09](#)

## Application Details

Application Notes: WB: 1:1000. IHC-P: 1:10~50

Restrictions: For Research Use only

## Handling

Format: Liquid

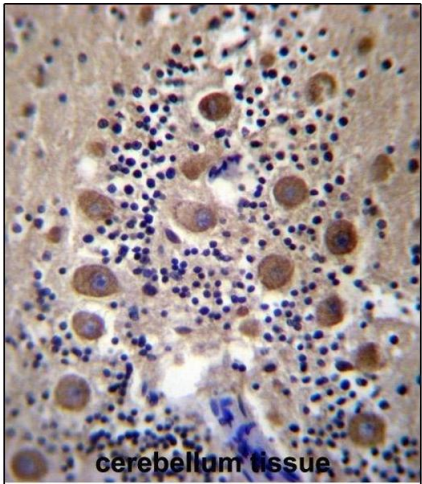
Buffer: Purified polyclonal antibody supplied in PBS with 0.09 % (W/V) sodium azide.

Preservative: Sodium azide

Precaution of Use: This product contains Sodium azide: a POISONOUS AND HAZARDOUS SUBSTANCE which should be handled by trained staff only.

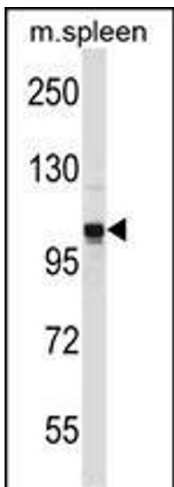
Storage: 4 °C, -20 °C

Expiry Date: 6 months



**Immunohistochemistry (Paraffin-embedded Sections)**

**Image 1.** GPRASP2 Antibody (N-term) (ABIN657059 and ABIN2846225) immunohistochemistry analysis in formalin fixed and paraffin embedded human cerebellum tissue followed by peroxidase conjugation of the secondary antibody and DAB staining. This data demonstrates the use of GPRASP2 Antibody (N-term) for immunohistochemistry. Clinical relevance has not been evaluated.



**Western Blotting**

**Image 2.** GPRASP2 Antibody (N-term) (ABIN657059 and ABIN2846225) western blot analysis in mouse spleen tissue lysates (35 µg/lane). This demonstrates the GPRASP2 antibody detected the GPRASP2 protein (arrow).