

Datasheet for ABIN657066  
**anti-PACS2 antibody (C-Term)**

## 2 Images

[Go to Product page](#)

## Overview

|                      |  |
|----------------------|--|
| Quantity:            | 400 µL   |
| Target:              | PACS2  |
| Binding Specificity: | AA 642-671, C-Term   |
| Reactivity:          | Human  |
| Host:                | Rabbit   |
| Clonality:           | Polyclonal   |
| Application:         | Western Blotting (WB), Immunohistochemistry (Paraffin-embedded Sections) (IHC (p)) |

## Product Details

|               |  |
|---------------|--|
| Immunogen:    | This PACS2 antibody is generated from rabbits immunized with a KLH conjugated synthetic peptide between 642-671 amino acids from the C-terminal region of human PACS2. |
| Clone:        | RB32549  |
| Isotype:      | Ig Fraction  |
| Purification: | This antibody is purified through a protein A column, followed by peptide affinity purification.   |

## Target Details

|                   |  |
|-------------------|--|
| Target:           | PACS2  |
| Alternative Name: | PACS2 ( <a href="#">PACS2 Products</a> )   |
| Background:       | Multifunctional sorting protein that controls the endoplasmic reticulum (ER)-mitochondria communication, including the apposition of mitochondria with the ER and ER homeostasis. In addition, in response to apoptic inducer, translocates BIB to mitochondria, which initiates a |

## Target Details

sequence of events including the formation of mitochondrial truncated BID, the release of cytochrome c, the activation of caspase-3 thereby causing cell death. May also be involved in ion channel trafficking, directing acidic cluster-containing ion channels to distinct subcellular compartments.

Molecular Weight: 97702

NCBI Accession: [NP\\_001094383](#), [NP\\_001230056](#), [NP\\_056012](#)

UniProt: [Q86VP3](#)

## Application Details

Application Notes: WB: 1:1000. IHC-P: 1:10~50

Restrictions: For Research Use only

## Handling

Format: Liquid

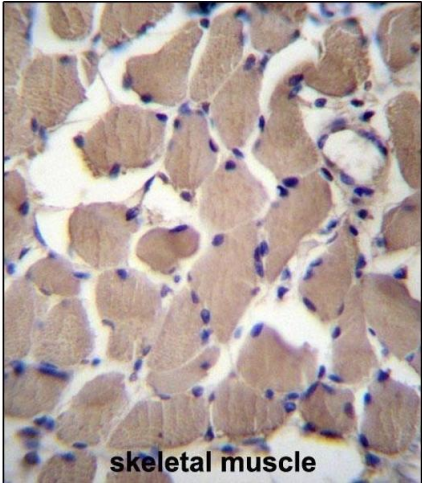
Buffer: Purified polyclonal antibody supplied in PBS with 0.09 % (W/V) sodium azide.

Preservative: Sodium azide

Precaution of Use: This product contains Sodium azide: a POISONOUS AND HAZARDOUS SUBSTANCE which should be handled by trained staff only.

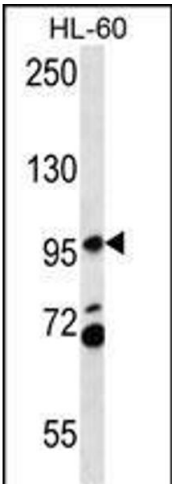
Storage: 4 °C, -20 °C

Expiry Date: 6 months



**Immunohistochemistry (Paraffin-embedded Sections)**

**Image 1.** CS2 Antibody (C-term) (ABIN657066 and ABIN2846230) immunohistochemistry analysis in formalin fixed and raffin embedded human skeletal muscle followed by peroxidase conjugation of the secondary antibody and DAB staining.This data demonstrates the use of CS2 Antibody (C-term) for immunohistochemistry. Clinical relevance has not been evaluated.



**Western Blotting**

**Image 2.** CS2 Antibody (C-term) (ABIN657066 and ABIN2846230) western blot analysis in HL-60 cell line lysates (35 µg/lane).This demonstrates the CS2 antibody detected the CS2 protein (arrow).