



[Go to Product page](#)

Datasheet for ABIN657067
anti-NPTXR antibody (AA 180-209)

2 Images

Overview

Quantity:	400 µL
Target:	NPTXR
Binding Specificity:	AA 180-209
Reactivity:	Human
Host:	Rabbit
Clonality:	Polyclonal
Application:	Western Blotting (WB), Immunohistochemistry (Paraffin-embedded Sections) (IHC (p))

Product Details

Immunogen:	This NPTXR antibody is generated from rabbits immunized with a KLH conjugated synthetic peptide between 180-209 amino acids from the Central region of human NPTXR.
Clone:	RB32555
Isotype:	Ig Fraction
Purification:	This antibody is purified through a protein A column, followed by peptide affinity purification.

Target Details

Target:	NPTXR
Alternative Name:	NPTXR (NPTXR Products)
Background:	This gene encodes a protein similar to the rat neuronal pentraxin receptor. The rat pentraxin receptor is an integral membrane protein that is thought to mediate neuronal uptake of the snake venom toxin, taipoxin, and its transport into the synapses. Studies in rat indicate that

Target Details

translation of this mRNA initiates at a non-AUG (CUG) codon. This may also be true for mouse and human, based on strong sequence conservation amongst these species.

Molecular Weight: 52846

NCBI Accession: [NP_055108](#)

UniProt: [O95502](#)

Application Details

Application Notes: WB: 1:1000. IHC-P: 1:10~50

Restrictions: For Research Use only

Handling

Format: Liquid

Buffer: Purified polyclonal antibody supplied in PBS with 0.09 % (W/V) sodium azide.

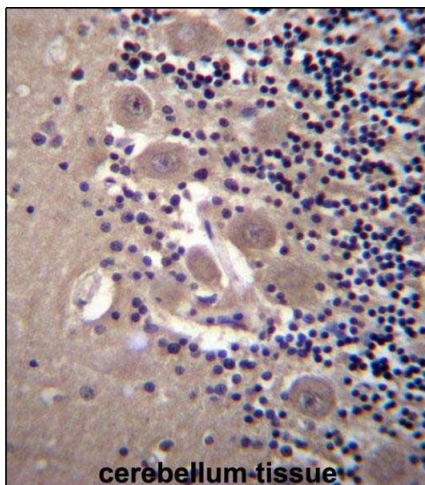
Preservative: Sodium azide

Precaution of Use: This product contains Sodium azide: a POISONOUS AND HAZARDOUS SUBSTANCE which should be handled by trained staff only.

Storage: 4 °C,-20 °C

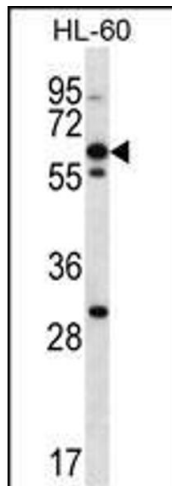
Expiry Date: 6 months

Images



Immunohistochemistry (Paraffin-embedded Sections)

Image 1. NPTXR Antibody (Center) (ABIN657067 and ABIN2846231) immunohistochemistry analysis in formalin fixed and paraffin embedded human cerebellum tissue followed by peroxidase conjugation of the secondary antibody and DAB staining. This data demonstrates the use of NPTXR Antibody (Center) for immunohistochemistry. Clinical relevance has not been evaluated.



Western Blotting

Image 2. NPTXR Antibody (Center) (ABIN657067 and ABIN2846231) western blot analysis in HL-60 cell line lysates (35 µg/lane). This demonstrates the NPTXR antibody detected the NPTXR protein (arrow).