

Datasheet for ABIN657071
anti-PLS1 antibody (C-Term)[Go to Product page](#)

2 Images

1 Publication

Overview

Quantity:	400 µL
Target:	PLS1
Binding Specificity:	AA 550-579, C-Term
Reactivity:	Human
Host:	Rabbit
Clonality:	Polyclonal
Application:	Western Blotting (WB), Immunohistochemistry (Paraffin-embedded Sections) (IHC (p))

Product Details

Immunogen:	This PLS1 antibody is generated from rabbits immunized with a KLH conjugated synthetic peptide between 550-579 amino acids from the C-terminal region of human PLS1.
Clone:	RB32565
Isotype:	Ig Fraction
Purification:	This antibody is purified through a protein A column, followed by peptide affinity purification.

Target Details

Target:	PLS1
Alternative Name:	PLS1 (PLS1 Products)
Background:	Plastins are a family of actin-binding proteins that are conserved throughout eukaryote evolution and expressed in most tissues of higher eukaryotes. In humans, two ubiquitous plastin isoforms (L and T) have been identified. The protein encoded by this gene is a third

Target Details

distinct plastin isoform, which is specifically expressed at high levels in the small intestine. Alternatively spliced transcript variants varying in the 5' UTR, but encoding the same protein, have been found for this gene. A pseudogene of this gene is found on chromosome 11.

Molecular Weight:	70253
NCBI Accession:	NP_001138791 , NP_001165783 , NP_002661
UniProt:	Q14651

Application Details

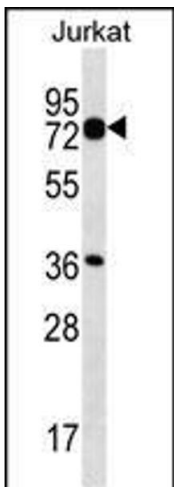
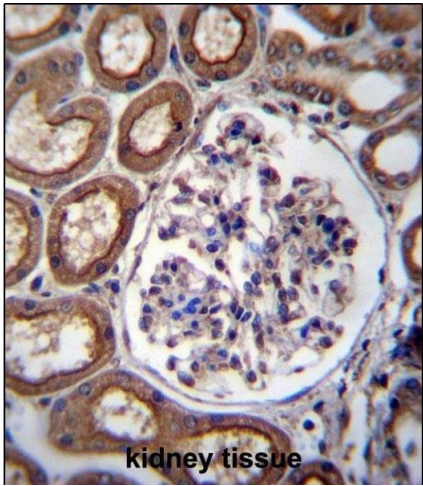
Application Notes:	WB: 1:1000. IHC-P: 1:10~50
Restrictions:	For Research Use only

Handling

Format:	Liquid
Buffer:	Purified polyclonal antibody supplied in PBS with 0.09 % (W/V) sodium azide.
Preservative:	Sodium azide
Precaution of Use:	This product contains Sodium azide: a POISONOUS AND HAZARDOUS SUBSTANCE which should be handled by trained staff only.
Storage:	4 °C,-20 °C
Expiry Date:	6 months

Publications

Product cited in:	Yan, Xu, Zhang, Lu, Luo, Xu: "Aldehyde dehydrogenase 1A1 stabilizes transcription factor Gli2 and enhances the activity of Hedgehog signaling in hepatocellular cancer." in: Biochemical and biophysical research communications , Vol. 471, Issue 4, pp. 466-73, (2016) (PubMed).
-------------------	---



Immunohistochemistry (Paraffin-embedded Sections)

Image 1. PLS1 Antibody (C-term) (ABIN657071 and ABIN2846234) immunohistochemistry analysis in formalin fixed and paraffin embedded human kidney tissue followed by peroxidase conjugation of the secondary antibody and DAB staining. This data demonstrates the use of PLS1 Antibody (C-term) for immunohistochemistry. Clinical relevance has not been evaluated.

Western Blotting

Image 2. PLS1 Antibody (C-term) (ABIN657071 and ABIN2846234) western blot analysis in Jurkat cell line lysates (35 µg/lane). This demonstrates the PLS1 antibody detected the PLS1 protein (arrow).