

Datasheet for ABIN657072
anti-GRHL2 antibody (AA 409-438)[Go to Product page](#)

1 Image

Overview

| | |
|----------------------|-----------------------|
| Quantity: | 400 µL |
| Target: | GRHL2 |
| Binding Specificity: | AA 409-438 |
| Reactivity: | Human |
| Host: | Rabbit |
| Clonality: | Polyclonal |
| Application: | Western Blotting (WB) |

Product Details

| | |
|-----------------------|---|
| Immunogen: | This GRHL2 antibody is generated from rabbits immunized with a KLH conjugated synthetic peptide between 409-438 amino acids from the Central region of human GRHL2. |
| Clone: | RB32577 |
| Isotype: | Ig Fraction |
| Predicted Reactivity: | M |
| Purification: | This antibody is purified through a protein A column, followed by peptide affinity purification. |

Target Details

| | |
|-------------------|--|
| Target: | GRHL2 |
| Alternative Name: | GRHL2 (GRHL2 Products) |
| Background: | The protein encoded by this gene is a transcription factor that can act as a homodimer or as a |

Target Details

| | |
|-------------------|---|
| | heterodimer with either GRHL1 or GRHL3. Defects in this gene are a cause of non-syndromic sensorineural deafness autosomal dominant type 28 (DFNA28). |
| Molecular Weight: | 71105 |
| NCBI Accession: | NP_079191 |
| UniProt: | Q6ISB3 |
| Pathways: | Tube Formation |

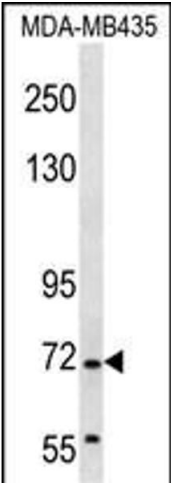
Application Details

| | |
|--------------------|-----------------------|
| Application Notes: | WB: 1:1000 |
| Restrictions: | For Research Use only |

Handling

| | |
|--------------------|--|
| Format: | Liquid |
| Buffer: | Purified polyclonal antibody supplied in PBS with 0.09 % (W/V) sodium azide. |
| Preservative: | Sodium azide |
| Precaution of Use: | This product contains Sodium azide: a POISONOUS AND HAZARDOUS SUBSTANCE which should be handled by trained staff only. |
| Storage: | 4 °C,-20 °C |
| Expiry Date: | 6 months |

Images



Western Blotting

Image 1. GRHL2 Antibody (Center) (ABIN657072 and ABIN2846235) western blot analysis in MDA-M cell line lysates (35 µg/lane). This demonstrates the GRHL2 antibody detected the GRHL2 protein (arrow).