

Datasheet for ABIN657085
anti-Calpain 8 antibody (AA 290-318)[Go to Product page](#)

2 Images

Overview

Quantity:	400 µL
Target:	Calpain 8 (CAPN8)
Binding Specificity:	AA 290-318
Reactivity:	Human
Host:	Rabbit
Clonality:	Polyclonal
Conjugate:	This Calpain 8 antibody is un-conjugated
Application:	Western Blotting (WB), Immunohistochemistry (Paraffin-embedded Sections) (IHC (p))

Product Details

Immunogen:	This CAPN8 antibody is generated from rabbits immunized with a KLH conjugated synthetic peptide between 290-318 amino acids from the Central region of human CAPN8.
Clone:	RB32686
Isotype:	Ig Fraction
Purification:	This antibody is purified through a protein A column, followed by peptide affinity purification.

Target Details

Target:	Calpain 8 (CAPN8)
Alternative Name:	CAPN8 (CAPN8 Products)
Background:	Calcium-regulated non-lysosomal thiol-protease. Involved in membrane trafficking in the gastric

Target Details

surface mucus cells (pit cells) and may involve the membrane trafficking of mucus cells via interactions with coat protein. Proteolytically cleaves the beta-subunit of coatomer complex (By similarity).

Molecular Weight:	79144
NCBI Accession:	NP_001137434
UniProt:	A6NHC0

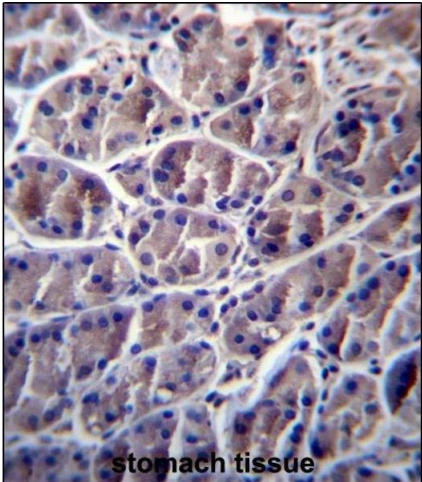
Application Details

Application Notes:	WB: 1:1000. IHC-P: 1:10~50
Restrictions:	For Research Use only

Handling

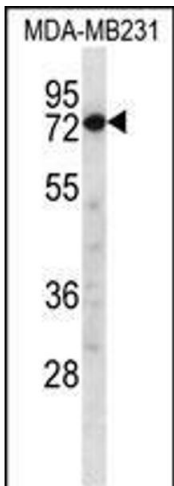
Format:	Liquid
Buffer:	Purified polyclonal antibody supplied in PBS with 0.09 % (W/V) sodium azide.
Preservative:	Sodium azide
Precaution of Use:	This product contains Sodium azide: a POISONOUS AND HAZARDOUS SUBSTANCE which should be handled by trained staff only.
Storage:	4 °C,-20 °C
Expiry Date:	6 months

Images



Immunohistochemistry (Paraffin-embedded Sections)

Image 1. CN8 Antibody (Center) 13161c immunohistochemistry analysis in formalin fixed and paraffin embedded human stomach tissue followed by peroxidase conjugation of the secondary antibody and DAB staining.This data demonstrates the use of CN8 Antibody (Center) for immunohistochemistry. Clinical relevance has not been evaluated.



Western Blotting

Image 2. CN8 Antibody (Center) 13161c western blot analysis in MDA-M cell line lysates (35 µg/lane). This demonstrates the CN8 antibody detected the CN8 protein (arrow).