

Datasheet for ABIN6570859

anti-LIPF antibody[Go to Product page](#)**1** Image

Overview

Quantity:	200 µL
Target:	LIPF
Reactivity:	Human, Mouse, Rat
Host:	Rabbit
Clonality:	Polyclonal
Conjugate:	This LIPF antibody is un-conjugated
Application:	Western Blotting (WB)

Product Details

Immunogen:	Recombinant protein of human LIPF
Isotype:	IgG
Purification:	Affinity purification

Target Details

Target:	LIPF
Alternative Name:	LIPF (LIPF Products)
Background:	<p>Synonyms: Gastric lipase,Gastric triacylglycerol lipase,gL,HGL,HLAL,LIPF,LIPG</p> <p>Background: This gene encodes gastric lipase, an enzyme involved in the digestion of dietary triglycerides in the gastrointestinal tract, and responsible for 30 % of fat digestion processes occurring in human. It is secreted by gastric chief cells in the fundic mucosa of the stomach, and it hydrolyzes the ester bonds of triglycerides under acidic pH conditions. The gene is a</p>

Target Details

member of a conserved gene family of lipases that play distinct roles in neutral lipid metabolism. Several transcript variants encoding different isoforms have been found for this gene.

Molecular Weight: Observed_MW: 45kDa
Calculated_MW: 41kDa/42kDa/45kDa/46kDa

Gene ID: 8513

UniProt: [P07098](#)

Application Details

Application Notes: WB 1:500 - 1:2000

Restrictions: For Research Use only

Handling

Concentration: 1 mg/mL

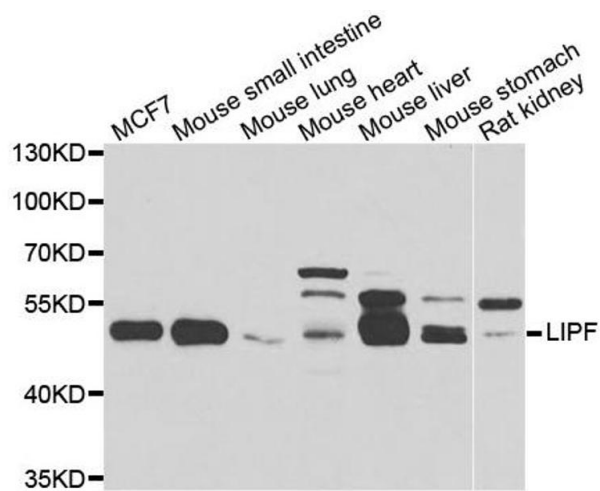
Buffer: Buffer: PBS with 0.02 % sodium azide, 50 % glycerol, pH 7.3.

Preservative: Sodium azide

Precaution of Use: This product contains Sodium azide: a POISONOUS AND HAZARDOUS SUBSTANCE which should be handled by trained staff only.

Storage: -20 °C

Storage Comment: Store at -20°C. Avoid freeze / thaw cycles.



Western Blotting

Image 1. Western blot analysis of extracts of various cell lines, using LIPF antibody.