

Datasheet for ABIN657087
anti-ITM2B antibody (C-Term)[Go to Product page](#)

2 Images

Overview

Quantity:	400 µL
Target:	ITM2B
Binding Specificity:	AA 218-247, C-Term
Reactivity:	Mouse
Host:	Rabbit
Clonality:	Polyclonal
Conjugate:	This ITM2B antibody is un-conjugated
Application:	Western Blotting (WB), Immunohistochemistry (Paraffin-embedded Sections) (IHC (p))

Product Details

Immunogen:	This ITM2B antibody is generated from rabbits immunized with a KLH conjugated synthetic peptide between 218-247 amino acids from the C-terminal region of human ITM2B.
Clone:	RB32712
Isotype:	Ig Fraction
Predicted Reactivity:	Pr
Purification:	This antibody is purified through a protein A column, followed by peptide affinity purification.

Target Details

Target:	ITM2B
Alternative Name:	ITM2B (ITM2B Products)

Target Details

Background: Amyloid precursor proteins are processed by beta-secretase and gamma-secretase to produce beta-amyloid peptides which form the characteristic plaques of Alzheimer disease. This gene encodes a transmembrane protein which is processed at the C-terminus by furin or furin-like proteases to produce a small secreted peptide which inhibits the deposition of beta-amyloid. Mutations which result in extension of the C-terminal end of the encoded protein, thereby increasing the size of the secreted peptide, are associated with two neurodegenerative diseases, familial British dementia and familial Danish dementia.

Molecular Weight: 30338

NCBI Accession: [NP_068839](#)

UniProt: [Q9Y287](#)

Application Details

Application Notes: WB: 1:1000. IHC-P: 1:10~50

Restrictions: For Research Use only

Handling

Format: Liquid

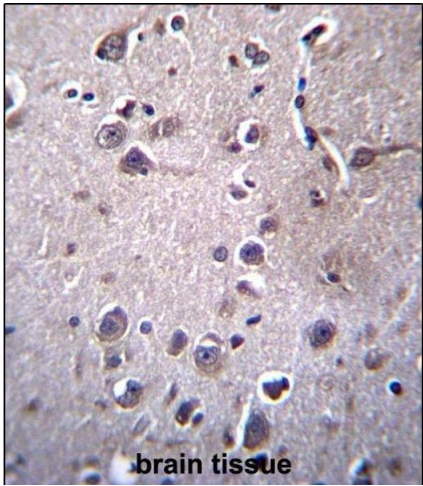
Buffer: Purified polyclonal antibody supplied in PBS with 0.09 % (W/V) sodium azide.

Preservative: Sodium azide

Precaution of Use: This product contains Sodium azide: a POISONOUS AND HAZARDOUS SUBSTANCE which should be handled by trained staff only.

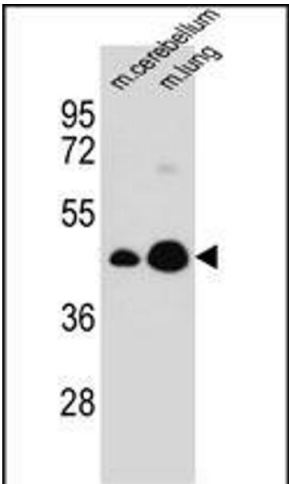
Storage: 4 °C, -20 °C

Expiry Date: 6 months



Immunohistochemistry (Paraffin-embedded Sections)

Image 1. ITM2B Antibody (C-term) (ABIN657087 and ABIN2846247) immunohistochemistry analysis in formalin fixed and paraffin embedded human brain tissue followed by peroxidase conjugation of the secondary antibody and DAB staining. This data demonstrates the use of ITM2B Antibody (C-term) for immunohistochemistry. Clinical relevance has not been evaluated.



Western Blotting

Image 2. ITM2B Antibody (C-term) (ABIN657087 and ABIN2846247) western blot analysis in mouse cerebellum, lung tissue lysates (35 µg/lane). This demonstrates the ITM2B antibody detected the ITM2B protein (arrow).