



[Go to Product page](#)

Datasheet for ABIN657088

anti-C7ORF25 antibody (N-Term)

2 Images

Overview

Quantity:	400 µL
Target:	C7ORF25
Binding Specificity:	AA 1-30, N-Term
Reactivity:	Human
Host:	Rabbit
Clonality:	Polyclonal
Conjugate:	This C7ORF25 antibody is un-conjugated
Application:	Western Blotting (WB), Immunohistochemistry (Paraffin-embedded Sections) (IHC (p))

Product Details

Immunogen:	This CG025 antibody is generated from rabbits immunized with a KLH conjugated synthetic peptide between 1-30 amino acids from the N-terminal region of human CG025.
Clone:	RB32719
Isotype:	Ig Fraction
Predicted Reactivity:	B, M
Purification:	This antibody is purified through a protein A column, followed by peptide affinity purification.

Target Details

Target:	C7ORF25
Alternative Name:	CG025 (C7ORF25 Products)

Target Details

Background:	The specific function of this protein remains unknown.
Molecular Weight:	46451
NCBI Accession:	NP_001093328 , NP_076959
UniProt:	Q9BPX7

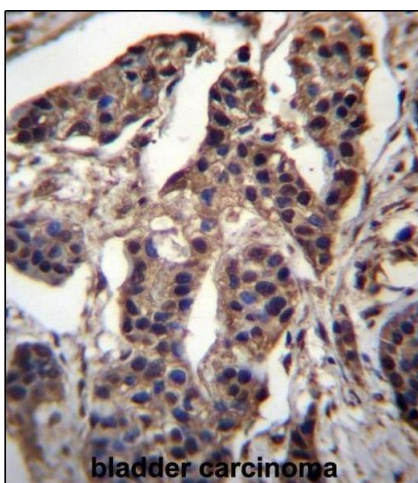
Application Details

Application Notes:	WB: 1:1000. IHC-P: 1:10~50
Restrictions:	For Research Use only

Handling

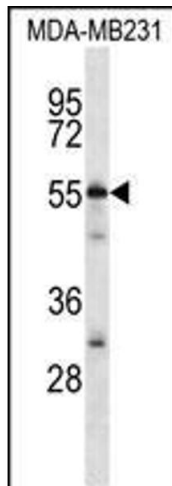
Format:	Liquid
Buffer:	Purified polyclonal antibody supplied in PBS with 0.09 % (W/V) sodium azide.
Preservative:	Sodium azide
Precaution of Use:	This product contains Sodium azide: a POISONOUS AND HAZARDOUS SUBSTANCE which should be handled by trained staff only.
Storage:	4 °C,-20 °C
Expiry Date:	6 months

Images



Immunohistochemistry (Paraffin-embedded Sections)

Image 1. CABIN486182 and ABIN1535563 Antibody (N-term) (ABIN657088 and ABIN2837891) immunohistochemistry analysis in formalin fixed and paraffin embedded human bladder carcinoma followed by peroxidase conjugation of the secondary antibody and DAB staining. This data demonstrates the use of CABIN486182 and ABIN1535563 Antibody (N-term) for immunohistochemistry. Clinical relevance has not been evaluated.



Western Blotting

Image 2. CABIN486182 and ABIN1535563 Antibody (N-term) (ABIN657088 and ABIN2837891) western blot analysis in MDA-M cell line lysates (35 µg/lane). This demonstrates the CABIN486182 and ABIN1535563 antibody detected the CABIN486182 and ABIN1535563 protein (arrow).