

Datasheet for ABIN6570892

anti-PPIE antibody**2** Images[Go to Product page](#)

Overview

Quantity:	200 µL
Target:	PPIE
Reactivity:	Human, Mouse, Rat
Host:	Rabbit
Clonality:	Polyclonal
Application:	Western Blotting (WB), Immunoprecipitation (IP)

Product Details

Immunogen:	Recombinant protein of human PPIE
Isotype:	IgG
Purification:	Affinity purification

Target Details

Target:	PPIE
Alternative Name:	PPIE (PPIE Products)
Background:	<p>Synonyms: Ab1-210,Cyclophilin 33,Cyclophilin E,Cyclophilin-33,CYP 33,CYP33,EC 5.2.1.8,Peptidyl prolyl cis trans isomerase E,Peptidyl-prolyl cis-trans isomerase E,Peptidylprolyl isomerase E (cyclophilin E),Peptidylprolyl isomerase E,PPIase E,PPIE,PPIE,Rotamase E</p> <p>Background: The protein encoded by this gene is a member of the peptidyl-prolyl cis-trans isomerase (PPIase) family. PPIases catalyze the cis-trans isomerization of proline imidic peptide bonds in oligopeptides and accelerate the folding of proteins. This protein contains a</p>

Target Details

highly conserved cyclophilin (CYP) domain as well as an RNA-binding domain. It was shown to possess PPlase and protein folding activities, and it also exhibits RNA-binding activity. Alternative splicing results in multiple transcript variants. A related pseudogene, which is also located on chromosome 1, has been identified.

Molecular Weight: Observed_MW: 33kDa
Calculated_MW: 33kDa/34kDa

Gene ID: 10450

UniProt: [Q9UNP9](#)

Application Details

Application Notes: WB 1:500 - 1:2000 IP 1:50 - 1:200

Restrictions: For Research Use only

Handling

Concentration: 1 mg/mL

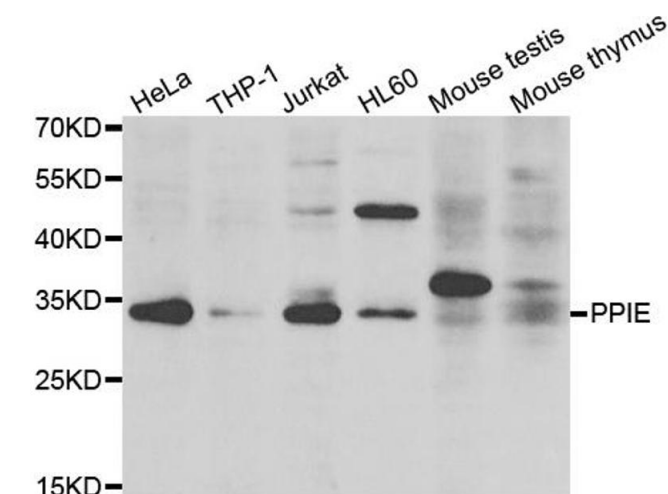
Buffer: Buffer: PBS with 0.02 % sodium azide, 50 % glycerol, pH 7.3.

Preservative: Sodium azide

Precaution of Use: This product contains Sodium azide: a POISONOUS AND HAZARDOUS SUBSTANCE which should be handled by trained staff only.

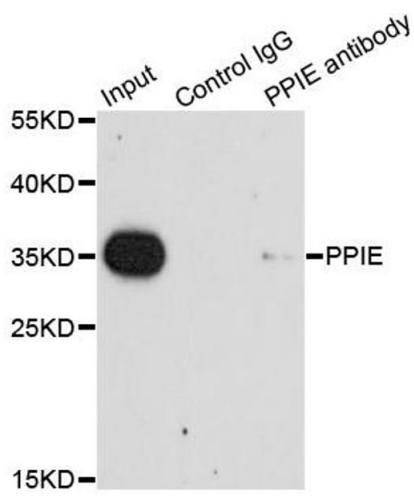
Storage: -20 °C

Storage Comment: Store at -20°C. Avoid freeze / thaw cycles.



Western Blotting

Image 1. Western blot analysis of extracts of various cell lines, using PPIE antibody.



Western Blotting

Image 2. Immunoprecipitation analysis of 200ug extracts of HeLa cells using 1ug PPIE antibody.