

Datasheet for ABIN657092  
**anti-NAT1 antibody (AA 102-130)**[Go to Product page](#)

## 1 Image

## Overview

Quantity:	400 µL
Target:	NAT1
Binding Specificity:	AA 102-130
Reactivity:	Human
Host:	Rabbit
Clonality:	Polyclonal
Application:	Western Blotting (WB)

## Product Details

Immunogen:	This NAT1 antibody is generated from rabbits immunized with a KLH conjugated synthetic peptide between 102-130 amino acids from the Central region of human NAT1.
Clone:	RB32732
Isotype:	Ig Fraction
Predicted Reactivity:	Rb
Purification:	This antibody is purified through a protein A column, followed by peptide affinity purification.

## Target Details

Target:	NAT1
Alternative Name:	NAT1 ( <a href="#">NAT1 Products</a> )
Background:	This gene is one of two arylamine N-acetyltransferase (NAT) genes in the human genome, and

## Target Details

is orthologous to the mouse and rat Nat2 genes. The enzyme encoded by this gene catalyzes the transfer of an acetyl group from acetyl-CoA to various arylamine and hydrazine substrates. This enzyme helps metabolize drugs and other xenobiotics, and functions in folate catabolism. Multiple transcript variants encoding different isoforms have been found for this gene.

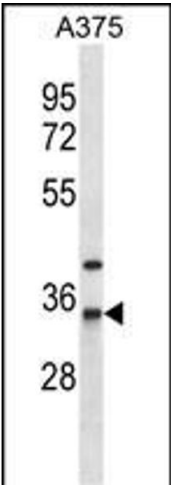
Molecular Weight:	33899
NCBI Accession:	<a href="#">NP_000653</a> , <a href="#">NP_001153642</a> , <a href="#">NP_001153643</a> , <a href="#">NP_001153644</a> , <a href="#">NP_001153645</a> , <a href="#">NP_001153646</a> , <a href="#">NP_001153651</a>
UniProt:	<a href="#">P18440</a>

## Application Details

Application Notes:	WB: 1:1000
Restrictions:	For Research Use only

## Handling

Format:	Liquid
Buffer:	Purified polyclonal antibody supplied in PBS with 0.09 % (W/V) sodium azide.
Preservative:	Sodium azide
Precaution of Use:	This product contains Sodium azide: a POISONOUS AND HAZARDOUS SUBSTANCE which should be handled by trained staff only.
Storage:	4 °C, -20 °C
Expiry Date:	6 months



Western Blotting

**Image 1.** NAT1 Antibody (center) (ABIN657092 and ABIN2846250) western blot analysis in cell line lysates (35 µg/lane). This demonstrates the NAT1 antibody detected the NAT1 protein (arrow).