

Datasheet for ABIN657105
anti-HEBP2 antibody (N-Term)[Go to Product page](#)

1 Image

Overview

Quantity:	400 µL
Target:	HEBP2
Binding Specificity:	AA 18-47, N-Term
Reactivity:	Human
Host:	Rabbit
Clonality:	Polyclonal
Application:	Western Blotting (WB)

Product Details

Immunogen:	This HEBP2 antibody is generated from rabbits immunized with a KLH conjugated synthetic peptide between 18-47 amino acids from the N-terminal region of human HEBP2.
Clone:	RB32811
Isotype:	Ig Fraction
Predicted Reactivity:	M
Purification:	This antibody is purified through a protein A column, followed by peptide affinity purification.

Target Details

Target:	HEBP2
Alternative Name:	HEBP2 (HEBP2 Products)
Background:	HEBP2 can promote mitochondrial permeability transition and facilitate necrotic cell death

Target Details

under different types of stress conditions.

Molecular Weight:	22875
NCBI Accession:	NP_055135
UniProt:	Q9Y5Z4

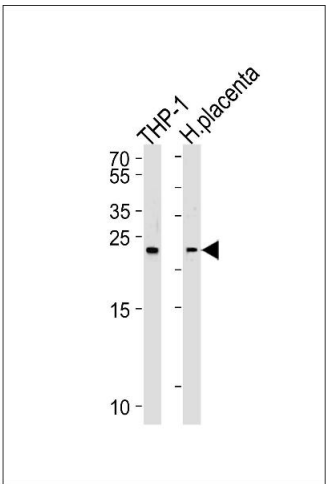
Application Details

Application Notes:	WB: 1:1000
Restrictions:	For Research Use only

Handling

Format:	Liquid
Buffer:	Purified polyclonal antibody supplied in PBS with 0.09 % (W/V) sodium azide.
Preservative:	Sodium azide
Precaution of Use:	This product contains Sodium azide: a POISONOUS AND HAZARDOUS SUBSTANCE which should be handled by trained staff only.
Storage:	4 °C, -20 °C
Expiry Date:	6 months

Images



Western Blotting

Image 1. Western blot analysis of lysates from THP-1 cell line and human placenta tissue lysates (from left to right), using HEBP2 Antibody (N-term) (ABIN657105 and ABIN2846255). (ABIN657105 and ABIN2846255) was diluted at 1:1000 at each lane. A goat anti-rabbit IgG H&L(HRP) at 1:5000 dilution was used as the secondary antibody. Lysates at 35 µg per lane.