



[Go to Product page](#)

Datasheet for ABIN657107

## anti-PAPOLG antibody (C-Term)

### 1 Image

#### Overview

Quantity:	400 µL
Target:	PAPOLG
Binding Specificity:	AA 685-714, C-Term
Reactivity:	Human
Host:	Rabbit
Clonality:	Polyclonal
Conjugate:	This PAPOLG antibody is un-conjugated
Application:	Western Blotting (WB)

#### Product Details

Immunogen:	This PAPOLG antibody is generated from rabbits immunized with a KLH conjugated synthetic peptide between 685-714 amino acids from the C-terminal region of human PAPOLG.
Clone:	RB32820
Isotype:	Ig Fraction
Purification:	This antibody is purified through a protein A column, followed by peptide affinity purification.

#### Target Details

Target:	PAPOLG
Alternative Name:	PAPOLG ( <a href="#">PAPOLG Products</a> )
Background:	This gene encodes a member of the poly(A) polymerase family which catalyzes template-

## Target Details

---

independent extension of the 3' end of a DNA/RNA strand. This enzyme shares 60 % identity to the well characterized poly(A) polymerase II (PAPII) at the amino acid level. These two enzymes have similar organization of structural and functional domains. This enzyme is exclusively localized in the nucleus and exhibits both nonspecific and CPSF (cleavage and polyadenylation specificity factor)/AAUAAA-dependent polyadenylation activity. This gene is located on chromosome 2 in contrast to the PAPII gene, which is located on chromosome 14.

---

Molecular Weight: 82803

---

NCBI Accession: [NP\\_075045](#)

---

UniProt: [Q9BWT3](#)

## Application Details

---

---

Application Notes: WB: 1:1000

---

Restrictions: For Research Use only

## Handling

---

---

Format: Liquid

---

Buffer: Purified polyclonal antibody supplied in PBS with 0.09 % (W/V) sodium azide.

---

Preservative: Sodium azide

---

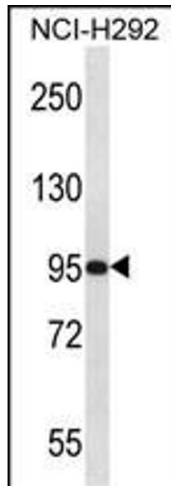
Precaution of Use: This product contains Sodium azide: a POISONOUS AND HAZARDOUS SUBSTANCE which should be handled by trained staff only.

---

Storage: 4 °C,-20 °C

---

Expiry Date: 6 months



### Western Blotting

**Image 1.** POLG Antibody (C-term) (ABIN657107 and ABIN2846257) western blot analysis in NCI- cell line lysates (35 µg/lane). This demonstrates the POLG antibody detected the POLG protein (arrow).