



[Go to Product page](#)

Datasheet for ABIN657109

## anti-Protocadherin 9 antibody (C-Term)

### 4 Images

#### Overview

Quantity:	400 µL
Target:	Protocadherin 9 (PCDH9)
Binding Specificity:	AA 1018-1046, C-Term
Reactivity:	Human
Host:	Rabbit
Clonality:	Polyclonal
Application:	Western Blotting (WB), Immunohistochemistry (Paraffin-embedded Sections) (IHC (p))

#### Product Details

Immunogen:	This PCDH9 antibody is generated from rabbits immunized with a KLH conjugated synthetic peptide between 1018-1046 amino acids from the C-terminal region of human PCDH9.
Clone:	RB32840
Isotype:	Ig Fraction
Purification:	This antibody is purified through a protein A column, followed by peptide affinity purification.

#### Target Details

Target:	Protocadherin 9 (PCDH9)
Alternative Name:	PCDH9 ( <a href="#">PCDH9 Products</a> )
Background:	This gene belongs to the protocadherin gene family, a subfamily of the cadherin superfamily. The mRNA encodes a cadherin-related neuronal receptor that localizes to synaptic junctions and is putatively involved in specific neuronal connections and signal transduction. Sharing a

## Target Details

characteristic with other protocadherin genes, this gene has a notably large exon that encodes six cadherin domains and a transmembrane region. Two alternatively spliced transcript variants encoding distinct isoforms have been found for this gene.

Molecular Weight: 136064

NCBI Accession: [NP\\_065136](#), [NP\\_982354](#)

UniProt: [Q9HC56](#)

## Application Details

Application Notes: WB: 1:2000. WB: 1:1000. IHC-P-Leica: 1:500. IHC-P-Leica: 1:500

Restrictions: For Research Use only

## Handling

Format: Liquid

Buffer: Purified polyclonal antibody supplied in PBS with 0.09 % (W/V) sodium azide.

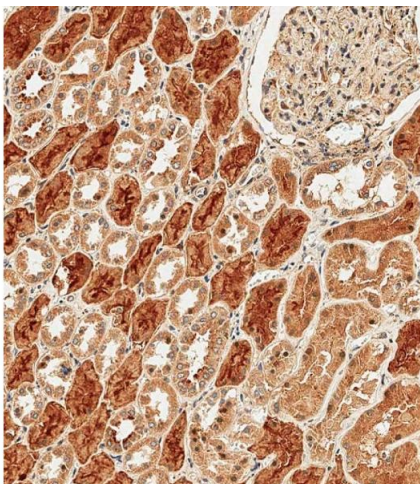
Preservative: Sodium azide

Precaution of Use: This product contains Sodium azide: a POISONOUS AND HAZARDOUS SUBSTANCE which should be handled by trained staff only.

Storage: 4 °C,-20 °C

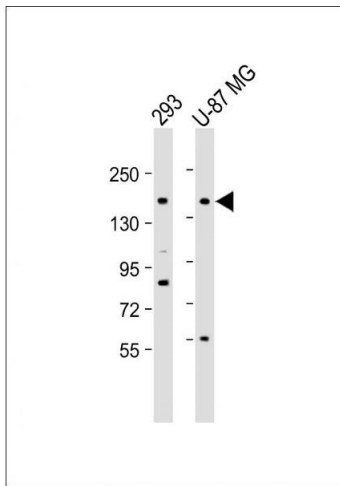
Expiry Date: 6 months

## Images



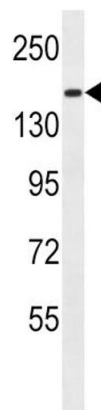
### Immunohistochemistry (Paraffin-embedded Sections)

**Image 1.** Immunohistochemical analysis of paraffin-embedded Human kidney tissue using B performed on the Leica® BOND RXm. Tissue was fixed with formaldehyde at room temperature, antigen retrieval was by heat mediation with a EDTA buffer ( pH 9. 0). Samples were incubated with primary Antibody (1:500) for 1 hours at room temperature. A undiluted biotinylated CRF Anti-Polyvalent HRP Polymer antibody was used as the secondary antibody.



### Western Blotting

**Image 2.** All lanes : Anti-PCDH9 Antibody (C-term) at 1:2000 dilution Lane 1: 293 whole cell lysate Lane 2: U-87 MG whole cell lysate Lysates/proteins at 20 µg per lane. Secondary Goat Anti-Rabbit IgG, (H+L), Peroxidase conjugated at 1/10000 dilution. Predicted band size : 136 kDa Blocking/Dilution buffer: 5 % NFDN/TBST.



### Western Blotting

**Image 3.** PCDH9 Antibody (C-term) (ABIN657109 and ABIN2837896) western blot analysis in MDA-M cell line lysates (35 µg/lane). This demonstrates the PCDH9 antibody detected the PCDH9 protein (arrow).

Please check the [product details page](#) for more images. Overall 4 images are available for ABIN657109.