



Datasheet for ABIN657113
anti-LRRC37B antibody (C-Term)



[Go to Product page](#)

2 Images

Overview

Quantity:	400 µL
Target:	LRRC37B
Binding Specificity:	AA 862-890, C-Term
Reactivity:	Human
Host:	Rabbit
Clonality:	Polyclonal
Conjugate:	This LRRC37B antibody is un-conjugated
Application:	Western Blotting (WB), Immunohistochemistry (Paraffin-embedded Sections) (IHC (p))

Product Details

Immunogen:	This LRRC37B antibody is generated from rabbits immunized with a KLH conjugated synthetic peptide between 862-890 amino acids from the C-terminal region of human LRRC37B.
Clone:	RB32864
Isotype:	Ig Fraction
Purification:	This antibody is purified through a protein A column, followed by peptide affinity purification.

Target Details

Target:	LRRC37B
Alternative Name:	LRRC37B (LRRC37B Products)
Background:	The specific function of this protein remains unknown.

Target Details

Molecular Weight: 105567

NCBI Accession: [NP_443120](#)

UniProt: [Q96QE4](#)

Application Details

Application Notes: WB: 1:1000. IHC-P: 1:10~50

Restrictions: For Research Use only

Handling

Format: Liquid

Buffer: Purified polyclonal antibody supplied in PBS with 0.09 % (W/V) sodium azide.

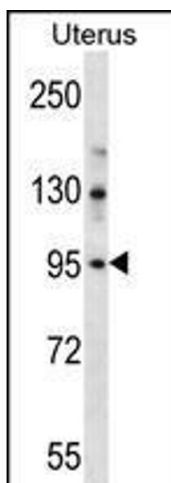
Preservative: Sodium azide

Precaution of Use: This product contains Sodium azide: a POISONOUS AND HAZARDOUS SUBSTANCE which should be handled by trained staff only.

Storage: 4 °C,-20 °C

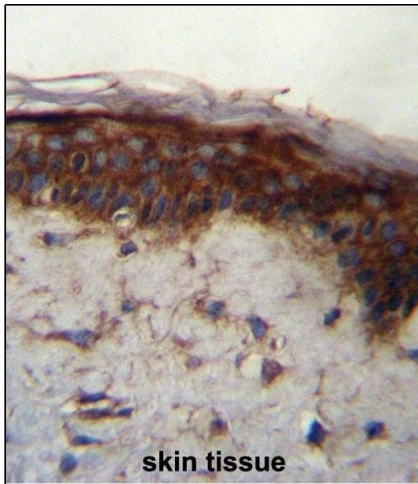
Expiry Date: 6 months

Validation report #102069 for Western Blotting (WB)



Western Blotting

Image 1. LRRC37B Antibody (C-term) (ABIN657113 and ABIN2846260) western blot analysis in human normal Uterus tissue lysates (35 µg/lane). This demonstrates the LRRC37B antibody detected the LRRC37B protein (arrow).



Immunohistochemistry (Paraffin-embedded Sections)

Image 2. LRRC37B Antibody (C-term) (ABIN657113 and ABIN2846260) immunohistochemistry analysis in formalin fixed and paraffin embedded human skin tissue followed by peroxidase conjugation of the secondary antibody and DAB staining. This data demonstrates the use of LRRC37B Antibody (C-term) for immunohistochemistry. Clinical relevance has not been evaluated.