



[Go to Product page](#)

Datasheet for ABIN657118  
**anti-PSORS1C1 antibody (N-Term)**

3 Images

### Overview

Quantity:	400 µL
Target:	PSORS1C1
Binding Specificity:	AA 13-42, N-Term
Reactivity:	Human
Host:	Rabbit
Clonality:	Polyclonal
Application:	Western Blotting (WB), Flow Cytometry (FACS), Immunohistochemistry (Paraffin-embedded Sections) (IHC (p))

### Product Details

Immunogen:	This PSORS1C1 antibody is generated from rabbits immunized with a KLH conjugated synthetic peptide between 13-42 amino acids from the N-terminal region of human PSORS1C1.
Clone:	RB32874
Isotype:	Ig Fraction
Purification:	This antibody is purified through a protein A column, followed by peptide affinity purification.

### Target Details

Target:	PSORS1C1
Alternative Name:	PSORS1C1 ( <a href="#">PSORS1C1 Products</a> )
Background:	The specific function of this protein remains unknown.

## Target Details

Molecular Weight: 16580

NCBI Accession: [NP\\_054787](#)

UniProt: [Q9UIG5](#)

## Application Details

Application Notes: WB: 1:1000. IHC-P: 1:10~50. FC: 1:10~50

Restrictions: For Research Use only

## Handling

Format: Liquid

Buffer: Purified polyclonal antibody supplied in PBS with 0.09 % (W/V) sodium azide.

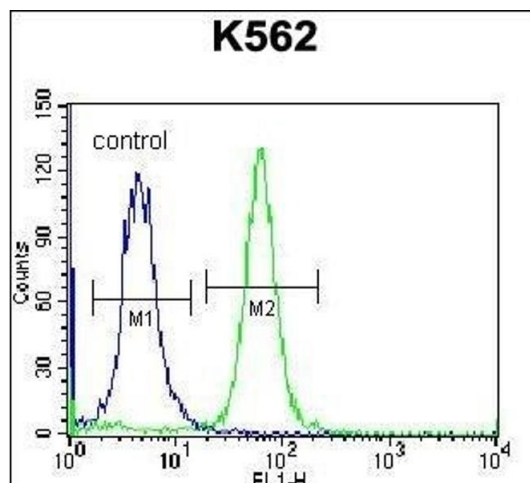
Preservative: Sodium azide

Precaution of Use: This product contains Sodium azide: a POISONOUS AND HAZARDOUS SUBSTANCE which should be handled by trained staff only.

Storage: 4 °C,-20 °C

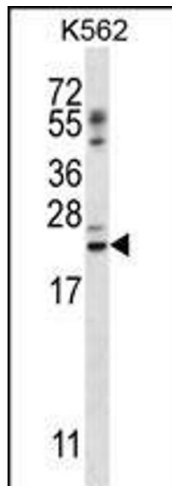
Expiry Date: 6 months

## Images



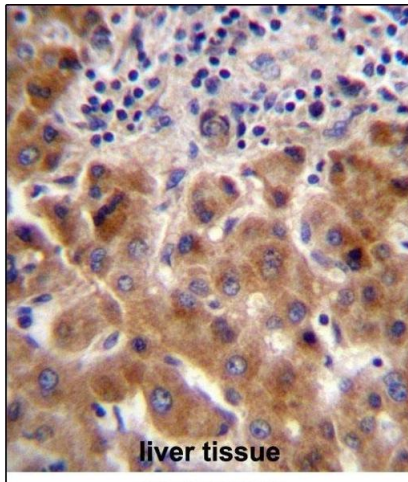
### Flow Cytometry

**Image 1.** PSORS1C1 Antibody (N-term) (ABIN657118 and ABIN2846264) flow cytometric analysis of K562 cells (right histogram) compared to a negative control cell (left histogram). FITC-conjugated donkey-anti-rabbit secondary antibodies were used for the analysis.



### Western Blotting

**Image 2.** PSORS1C1 Antibody (N-term) (ABIN657118 and ABIN2846264) western blot analysis in K562 cell line lysates (35 µg/lane). This demonstrates the PSORS1C1 antibody detected the PSORS1C1 protein (arrow).



### Immunohistochemistry (Paraffin-embedded Sections)

**Image 3.** PSORS1C1 Antibody (N-term) (ABIN657118 and ABIN2846264) immunohistochemistry analysis in formalin fixed and paraffin embedded human liver tissue followed by peroxidase conjugation of the secondary antibody and DAB staining. This data demonstrates the use of PSORS1C1 Antibody (N-term) for immunohistochemistry. Clinical relevance has not been evaluated.