

Datasheet for ABIN657121
anti-LHFPL1 antibody (N-Term)[Go to Product page](#)

1 Image

Overview

Quantity:	400 µL
Target:	LHFPL1
Binding Specificity:	AA 20-49, N-Term
Reactivity:	Human
Host:	Rabbit
Clonality:	Polyclonal
Conjugate:	This LHFPL1 antibody is un-conjugated
Application:	Western Blotting (WB)

Product Details

Immunogen:	This LHFPL1 antibody is generated from rabbits immunized with a KLH conjugated synthetic peptide between 20-49 amino acids from the N-terminal region of human LHFPL1.
Clone:	RB32880
Isotype:	Ig Fraction
Purification:	This antibody is purified through a protein A column, followed by peptide affinity purification.

Target Details

Target:	LHFPL1
Alternative Name:	LHFPL1 (LHFPL1 Products)
Background:	This gene is a member of the lipoma HMGIC fusion partner (LHFP) gene family, which is a

Target Details

subset of the superfamily of tetraspan transmembrane protein encoding genes. Mutations in one LHFP-like gene result in deafness in humans and mice, and a second LHFP-like gene is fused to a high-mobility group gene in a translocation-associated lipoma. Alternatively spliced transcript variants have been found, but their biological validity has not been determined.

Molecular Weight: 23777

NCBI Accession: [NP_835469](#)

UniProt: [Q86WI0](#)

Application Details

Application Notes: WB: 1:1000

Restrictions: For Research Use only

Handling

Format: Liquid

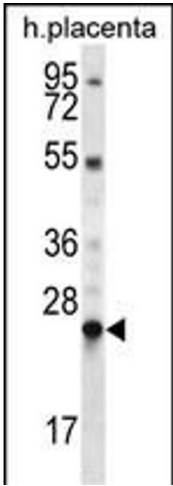
Buffer: Purified polyclonal antibody supplied in PBS with 0.09 % (W/V) sodium azide.

Preservative: Sodium azide

Precaution of Use: This product contains Sodium azide: a POISONOUS AND HAZARDOUS SUBSTANCE which should be handled by trained staff only.

Storage: 4 °C, -20 °C

Expiry Date: 6 months



Western Blotting

Image 1. LHFPL1 Antibody (N-term) (ABIN657121 and ABIN2837897) western blot analysis in human placenta tissue lysates (35 µg/lane). This demonstrates the LHFPL1 antibody detected the LHFPL1 protein (arrow).