

Datasheet for ABIN657140
anti-RAB3D antibody (C-Term)[Go to Product page](#)

3 Images

Overview

Quantity:	400 µL
Target:	RAB3D
Binding Specificity:	AA 185-212, C-Term
Reactivity:	Human
Host:	Rabbit
Clonality:	Polyclonal
Conjugate:	This RAB3D antibody is un-conjugated
Application:	Western Blotting (WB), Flow Cytometry (FACS), Immunohistochemistry (Paraffin-embedded Sections) (IHC (p))

Product Details

Immunogen:	This RAB3D antibody is generated from rabbits immunized with a KLH conjugated synthetic peptide between 185-212 amino acids from the C-terminal region of human RAB3D.
Clone:	RB32995
Isotype:	Ig Fraction
Purification:	This antibody is purified through a protein A column, followed by peptide affinity purification.

Target Details

Target:	RAB3D
Alternative Name:	RAB3D (RAB3D Products)

Target Details

Background:	RAB3D is a protein transport. Probably involved in regulated exocytosis (By similarity).
Molecular Weight:	24267
NCBI Accession:	NP_004274
UniProt:	O95716

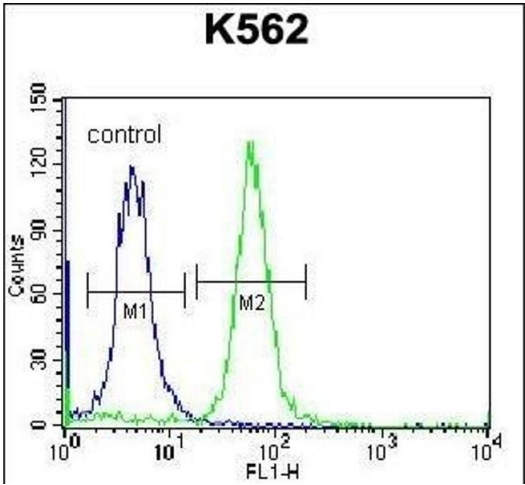
Application Details

Application Notes:	WB: 1:1000. IHC-P: 1:10~50. FC: 1:10~50
Restrictions:	For Research Use only

Handling

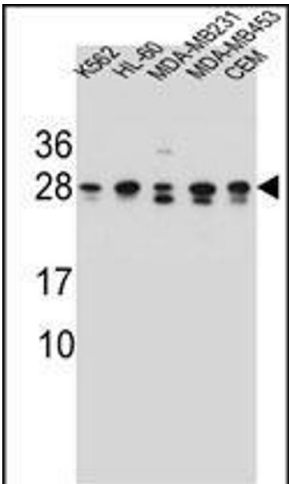
Format:	Liquid
Buffer:	Purified polyclonal antibody supplied in PBS with 0.09 % (W/V) sodium azide.
Preservative:	Sodium azide
Precaution of Use:	This product contains Sodium azide: a POISONOUS AND HAZARDOUS SUBSTANCE which should be handled by trained staff only.
Storage:	4 °C,-20 °C
Expiry Date:	6 months

Images



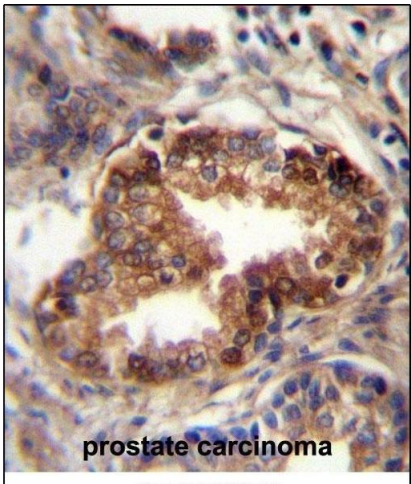
Flow Cytometry

Image 1. RAB3D Antibody (C-term) (ABIN657140 and ABIN2846278) flow cytometric analysis of K562 cells (right histogram) compared to a negative control cell (left histogram). FITC-conjugated donkey-anti-rabbit secondary antibodies were used for the analysis.



Western Blotting

Image 2. RAB3D Antibody (C-term) (ABIN657140 and ABIN2846278) western blot analysis in K562,HL-60,MDA-M,MDA-M,CEM cell line lysates (35 µg/lane).This demonstrates the RAB3D antibody detected the RAB3D protein (arrow).



Immunohistochemistry (Paraffin-embedded Sections)

Image 3. RAB3D Antibody (C-term) (ABIN657140 and ABIN2846278) immunohistochemistry analysis in formalin fixed and paraffin embedded human prostate carcinoma followed by peroxidase conjugation of the secondary antibody and DAB staining.This data demonstrates the use of RAB3D Antibody (C-term) for immunohistochemistry. Clinical relevance has not been evaluated.