



Datasheet for ABIN6571439
anti-FCGR3B antibody



[Go to Product page](#)

1 Image

Overview

Quantity:	200 µL
Target:	FCGR3B
Reactivity:	Human, Rat, Mouse
Host:	Rabbit
Clonality:	Polyclonal
Conjugate:	This FCGR3B antibody is un-conjugated
Application:	Western Blotting (WB)

Product Details

Immunogen:	Recombinant protein of human FCGR3B
Isotype:	IgG
Purification:	Affinity purification

Target Details

Target:	FCGR3B
Alternative Name:	FCGR3B (FCGR3B Products)
Background:	Synonyms: CD16,CD16b,CD16b antigen ,Fc fragment of IgG low affinity IIIb receptor,Fc gamma receptor IIIb,Fc gamma RIII,Fc gamma RIII beta,Fc gamma RIIIb,Fc-gamma RIII-beta,Fc-gamma RIIIb,FCG3,FCG3B,FCGR3,FCGR3B,FcR 10,FcR-10,FcR10,FcRIII,FcRIIIb,IGFR3,IgG Fc receptor III 1,IgG Fc receptor III-1,Low affinity immunoglobulin gamma Fc region receptor III B,Low affinity immunoglobulin gamma Fc region

Target Details

receptor III-B

Background: The protein encoded by this gene is a low affinity receptor for the Fc region of gamma immunoglobulins (IgG). The encoded protein acts as a monomer and can bind either monomeric or aggregated IgG. This gene may function to capture immune complexes in the peripheral circulation. Several transcript variants encoding different isoforms have been found for this gene. A highly-similar gene encoding a related protein is also found on chromosome 1.

Molecular Weight: Observed_MW: 26kDa
Calculated_MW: 26kDa

Gene ID: 2215

UniProt: [O75015](#)

Application Details

Application Notes: WB 1:500 - 1:2000

Restrictions: For Research Use only

Handling

Concentration: 1 mg/mL

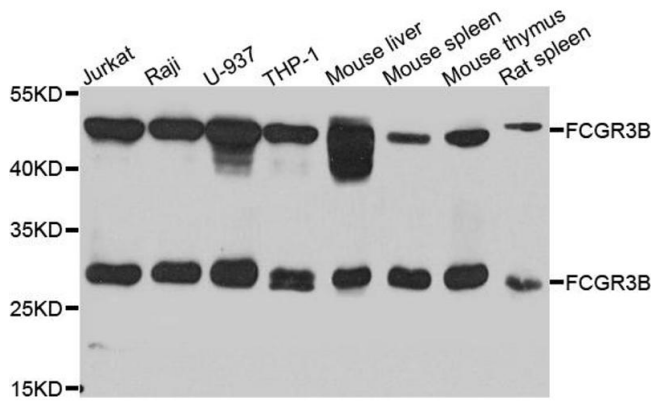
Buffer: Buffer: PBS with 0.02 % sodium azide, 50 % glycerol, pH 7.3.

Preservative: Sodium azide

Precaution of Use: This product contains Sodium azide: a POISONOUS AND HAZARDOUS SUBSTANCE which should be handled by trained staff only.

Storage: -20 °C

Storage Comment: Store at -20°C. Avoid freeze / thaw cycles.



Western Blotting

Image 1. Western blot analysis of extracts of various cell lines, using FCGR3B antibody.