



[Go to Product page](#)

Datasheet for ABIN657144

## anti-PDE6A antibody (AA 308-336)

### 1 Image

#### Overview

Quantity:	400 µL
Target:	PDE6A
Binding Specificity:	AA 308-336
Reactivity:	Human
Host:	Rabbit
Clonality:	Polyclonal
Conjugate:	This PDE6A antibody is un-conjugated
Application:	Western Blotting (WB)

#### Product Details

Immunogen:	This PDE6A antibody is generated from rabbits immunized with a KLH conjugated synthetic peptide between 308-336 amino acids from the Central region of human PDE6A.
Clone:	RB33012
Isotype:	Ig Fraction
Predicted Reactivity:	B, M
Purification:	This antibody is purified through a protein A column, followed by peptide affinity purification.

#### Target Details

Target:	PDE6A
Alternative Name:	PDE6A ( <a href="#">PDE6A Products</a> )

## Target Details

---

**Background:** This gene encodes the cyclic-GMP (cGMP)-specific phosphodiesterase 6A alpha subunit, expressed in cells of the retinal rod outer segment. The phosphodiesterase 6 holoenzyme is a heterotrimer composed of an alpha, beta, and two gamma subunits. cGMP is an important regulator of rod cell membrane current, and its dynamic concentration is established by phosphodiesterase 6A cGMP hydrolysis and guanylate cyclase cGMP synthesis. The protein is a subunit of a key phototransduction enzyme and participates in processes of transmission and amplification of the visual signal. Mutations in this gene have been identified as one cause of autosomal recessive retinitis pigmentosa.

**Molecular Weight:** 99547

**NCBI Accession:** [NP\\_000431](#)

**UniProt:** [P16499](#)

**Pathways:** [Regulation of G-Protein Coupled Receptor Protein Signaling](#), [Phototransduction](#)

## Application Details

---

**Application Notes:** WB: 1:1000

**Restrictions:** For Research Use only

## Handling

---

**Format:** Liquid

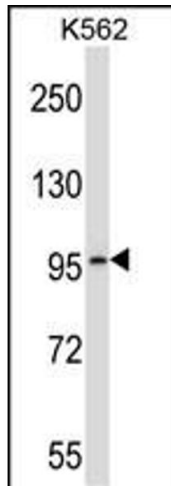
**Buffer:** Purified polyclonal antibody supplied in PBS with 0.09 % (W/V) sodium azide.

**Preservative:** Sodium azide

**Precaution of Use:** This product contains Sodium azide: a POISONOUS AND HAZARDOUS SUBSTANCE which should be handled by trained staff only.

**Storage:** 4 °C,-20 °C

**Expiry Date:** 6 months



### Western Blotting

**Image 1.** PDE6A Antibody (Center) (ABIN657144 and ABIN2846281) western blot analysis in K562 cell line lysates (35 µg/lane). This demonstrates the PDE6A antibody detected the PDE6A protein (arrow).