

Datasheet for ABIN657146  
**anti-WNT16 antibody (C-Term)**



[Go to Product page](#)

3 Images

## Overview

Quantity:	400 µL
Target:	WNT16
Binding Specificity:	AA 236-265, C-Term
Reactivity:	Human
Host:	Rabbit
Clonality:	Polyclonal
Conjugate:	This WNT16 antibody is un-conjugated
Application:	Western Blotting (WB), Immunohistochemistry (Paraffin-embedded Sections) (IHC (p))

## Product Details

Immunogen:	This WNT16 antibody is generated from rabbits immunized with a KLH conjugated synthetic peptide between 236-265 amino acids from the C-terminal region of human WNT16.
Clone:	RB33027
Isotype:	Ig Fraction
Predicted Reactivity:	M
Purification:	This antibody is purified through a protein A column, followed by peptide affinity purification.

## Target Details

Target:	WNT16
Alternative Name:	WNT16 ( <a href="#">WNT16 Products</a> )

## Target Details

---

**Background:** The WNT gene family consists of structurally related genes which encode secreted signaling proteins. These proteins have been implicated in oncogenesis and in several developmental processes, including regulation of cell fate and patterning during embryogenesis. This gene is a member of the WNT gene family. It contains two transcript variants diverging at the 5' termini. These two variants are proposed to be the products of separate promoters and not to be splice variants from a single promoter. They are differentially expressed in normal tissues, one of which (variant 2) is expressed at significant levels only in the pancreas, whereas another one (variant 1) is expressed more ubiquitously with highest levels in adult kidney, placenta, brain, heart, and spleen.

---

**Molecular Weight:** 40690

---

**NCBI Accession:** [NP\\_057171](#), [NP\\_476509](#)

---

**UniProt:** [Q9UBV4](#)

---

**Pathways:** [WNT Signaling](#)

## Application Details

---

**Application Notes:** WB: 1:1000. WB: 1:1000. IHC-P: 1:10~50

---

**Restrictions:** For Research Use only

## Handling

---

**Format:** Liquid

---

**Buffer:** Purified polyclonal antibody supplied in PBS with 0.09 % (W/V) sodium azide.

---

**Preservative:** Sodium azide

---

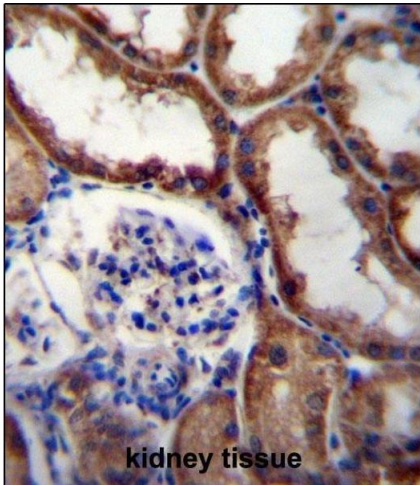
**Precaution of Use:** This product contains Sodium azide: a POISONOUS AND HAZARDOUS SUBSTANCE which should be handled by trained staff only.

---

**Storage:** 4 °C,-20 °C

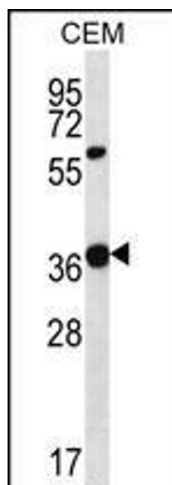
---

**Expiry Date:** 6 months



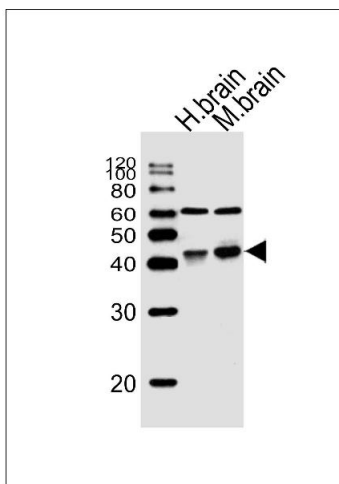
### Immunohistochemistry (Paraffin-embedded Sections)

**Image 1.** WNT16 Antibody (C-term) (ABIN657146 and ABIN2846282) immunohistochemistry analysis in formalin fixed and paraffin embedded human kidney tissue followed by peroxidase conjugation of the secondary antibody and DAB staining. This data demonstrates the use of WNT16 Antibody (C-term) for immunohistochemistry. Clinical relevance has not been evaluated.



### Western Blotting

**Image 2.** WNT16 Antibody (C-term) (ABIN657146 and ABIN2846282) western blot analysis in CEM cell line lysates (35 µg/lane). This demonstrates the WNT16 antibody detected the WNT16 protein (arrow).



### Western Blotting

**Image 3.** Western blot analysis of lysates from human brain, mouse brain tissue (from left to right), using WNT16 Antibody (C-term) (ABIN657146 and ABIN2846282). (ABIN657146 and ABIN2846282) was diluted at 1:1000 at each lane. A goat anti-rabbit IgG H&L(HRP) at 1:10000 dilution was used as the secondary antibody. Lysates at 20 µg per lane.